

SP-1200 OWNERS MANUAL



by

CRAIG ANDERTON

E-MU PN FI 332 Rev. E

Copyright 1987 by E-MU Systems, Inc. Scotts Valley, CA 95067 • All Rights Reserved

SP-1200 Operation Manual
© 1987 E-MU Systems
All Rights Reserved

E-MU PN FI 332 Rev. E

E-MU/ENSONIQ World Headquarters

1600 Green Hills Road
P.O. Box 660015
Scotts Valley, CA USA
95067-0015
Telephone: 831-438-1921
Fax: 831-438-8612
Internet: www.emu.com

Europe, Africa, Middle East
E-mu Systems, Ltd.

Suite 6, Adam Ferguson House
Eskmills Industrial Park
Musselburgh, East Lothian
Scotland, EH21 7PQ
Telephone: 44-31-653-6556
Fax: 44-31-665-0473

Notice:

This product is covered under one or more of the following U.S. patents: 3,969,682; 3,986,423; 4,404,529; 4,699,038; 4,987,600; 5,013,105; 5,072,645; 5,111,727 and foreign patents and/or pending patents.

SP-1200 is a registered trademark of E-MU Systems, Inc.

Table of Contents

What is it?	1
SP-1200 Ground Rules	1
Activating and De-activating Modules	1
Accessing Functions Within the Module	1
What's a Default?	1
Settings & Values	2
Entering	2
Leading Zeroes	2
Segment and Song Modes	2
The Transitory Nature of Segment Mode	3
The Right Arrow/Left Arrow Buttons (stepping and "fast forwarding")	3
The Current Song Display	3
The Current Segment Display	3
Beep messages	3
Part 1: Getting Ready	5
1A Setup	6
1B Instant Gratification!	6
1C Background: The Performance Module	7
1D Selecting Drum Sounds	7
1E Adjusting the Mix	8
1F Tuning the Drums/Changing Decay (SET-UP 18)	8
1G Background: Setting Up Additional Sounds Using the Setup Module	9
1H Accessing/Exiting Multilevel (SET-UP 12 & 13)	9
1I Accessing/Exiting Multipitch (SET-UP 11 & 13)	10
1J Accessing Dynamics (SET-UP 14)	10
1K Storing (Defining) a Mix (SET-UP 15)	11
1L Auditioning (Selecting) a Mix (SET-UP 16)	11
1M Assigning Drum Sounds to Output Channels (SET-UP 17)	12
1N Dynamic Allocation (SET-UP Special Function 22)	13
1O Playing Back Segments	13
1P Setting Tempo	14
1Q Programming the Metronome	15

CONTENTS

Part 2: Recording Segments	17
2A Recording A Segment: Overview	18
2B Erasing a Segment	18
2C “Dimensioning” a Segment (setting time signature and/or bar length).....	19
Part 1: Standard Dimensioning	19
Part 2: Real-Time Dimensioning	20
Part 3: Truncation	21
2D Understanding Auto Correct	21
2E Setting Auto Correct.....	23
2F Recording a Segment in Real Time (also “Repeat” recording)	23
2G Recording a Segment in Step Time.....	25
2H Erasing A Specific Drum Sound	26
2I Erasing a Specific Note of a Drum Track.....	26
2J Copying and Appending Segments	27
2K Adding Swing	28
2L Swapping Drum Sounds (SET-UP Special Function 18).....	29
2M Copying Sounds (SET-UP Special Function 17)	29
2N Clearing The Memoryn (SET-UP Special Functions 12, 15, & 16)	30
2O Check Remaining Memory (SET-UP Special Function 13)	30
Part 3: Creating a Song	31
3A Creating a Song: Overview	32
3B Selecting a Song.....	33
To Choose a Particular Song:	33
3C Chaining Segments Together	34
3D Ending a Song	35
3E Editing Songs (stepping, inserting, deleting)	35
3F Using Repeats	36
3G Changing the Song Drum Sound Mix	38
3H Setting Song Tempo	39
3I Programming Tempo Changes Within a Song	39
Part 4: Sampling Your Own Sounds.....	41
4A Sampling: An Overview	42
4B Setting Levels Prior to Sampling (SAMPLE 1 & 3)	42
4C Assigning the Sample to a Play Button and Output (SAMPLE 2).....	43
4D Setting the Sampling Threshold (SAMPLE 4).....	43
4E Setting the Sample Length (SAMPLE 5)	44
4F Initiating and Stopping Sampling (SAMPLE 7 & 9)	44
4G Deleting (Erasing) a Sound (SET-UP 20)	45
4H Modifying a Sample Via Truncation and Looping (SET-UP 19).....	46

CONTENTS

Part 5: Saving Your Data	49
5A Background: Saving Data	50
5B General Care and Handling of Disks	50
Inserting the disk in the drive	50
Labelling	51
Write-protecting disks	51
5C Formatting Disks and Copying Software (DISK 9)	52
To Format a Disk:	53
To Copy Software:	53
5D Disk Operations (DISK 0 through 8)	53
Part 6: MIDI, Sync & SMPTE	55
6A MIDI Channel and Mode Select (SET-UP 22)	56
Emax Keyboard to SP-1200 Play Buttons Chart	57
6B Background: Synchronization	58
6C Internal Sync (SYNC 1)	58
6D MIDI Sync (SYNC 2)	58
6E SMPTE Sync (SYNC 3)	59
6F Click Sync (SYNC 4)	60
6G Writing SMPTE Time Code on Tape (SET-UP Special Function 14)	61
6H Writing a 24 Pulses-Per-Quarter Note Click Sync Track on Tape	62
7: Mixing & Processing the SP-1200	63
7A Mixing and Processing: Overview	64
7B Pseudo Automated Mixdown	64
7C Creating Ambience	64
7D Using Special Effects in the Studio	65
Appendix	67
Appendix A: The Art of Sampling	67
Part 1: Taking the Best Possible Sample	67
General Tips	67
Maintaining sample quality when sampling from tape recordings:	69
Part 2: Manipulating the Sample	69
Appendix B: Understanding Rhythmic Notation	70
Appendix C: Understanding Time Signatures	70
Appendix D: Understanding MIDI/SMPTE	71
Appendix E: Tips on Creating Realistic Drum Parts	74
Appendix F: How the SP-1200 Works	74
Appendix G: Special Functions (SET-UP MODULE FUNCTION #23)	75
Appendix H: Interface Interconnection	81

Appendix I: Cassette/MidiDisk Operation	82
Appendix J: MIDI Implementation	83
SP 1200 MIDI Implementation Chart	83

WHAT IS IT?

The SP-1200 is the latest member of E-MU's family of high-technology musical instruments. It combines the most popular features of our first drum machine, the Drumulator, along with the Emulator II's sampling capabilities, modular design, and extensive use of display messages.

Thanks to 12 bit sound digitizing, the drum sounds have a crispness and dynamic range unattainable with the more common (and inexpensive) 8 bit digitizing technology. Best of all, despite the wide range of functions the

SP-1200 is remarkably easy to learn and use. After even a short period of familiarization, creating drum parts becomes second nature. We have made every effort to make the SP-1200's operation as transparent as possible, so that you can get rhythmic ideas from your head into reality in the shortest possible time.

You're going to love what the SP-1200 can do. Ready? Let's start.

SP-1200 GROUND RULES

Here are all the background terms you will need to know in order to make sense of the manual.

Activating and De-activating Modules

The SP-1200 is organized as seven modules: Set-up, Disk, Sync, Sample, Master Control, Programming, and Performance. The Set-up, Disk, Sync, and Sample modules are used less frequently than the others, and are normally inactive. To access the functions in one of these modules, it must be activated by pressing the switch located in the module. When activated, the associated LED will glow and functions other than those which pertain to the module will be locked out.

After you have finished working with a module, de-activate it by pressing the switch again (the associated LED will extinguish); or, select a different module.

Accessing Functions Within the Module

The Set-up, Disk, Sync, and Sample modules include a printed list of functions. When the module is active, you can select the desired function by keying in its number. Example: If while the Set-up module is active you wanted to alter the MIDI parameters, you would key in 22. If you wanted to define a mix, you would key in 15.

What's a Default?

A default is the setting or value that a function assumes until changed; the default is generally the most common option for a given function. Example: Most metronomes click every quarter note, so the SP-1200's metronome defaults to quarter notes. However, this default setting can be easily changed to any one of several other values.

INTRODUCTION

SETTINGS & VALUES

There are two ways of altering the SP-1200's parameters. One is to alter a slider setting; this is typically done when changing levels, pitch, and so on. The other is to specify a numeric value with the keypad. This is typically done when telling the SP-1200 how many measures long a segment should be, the time signature, and so on.

Entering

During the process of specifying a setting or value, it is necessary to tell the SP-1200's computer when the data you select should be entered into memory. For example, suppose you're setting the tempo; typically, you would vary the tempo until the groove sounded "just right". However, how is the computer going to know that the tempo you have just selected is the right one?

Pressing the ENTER button tells the computer to write the desired setting or value you have selected into its memory. Generally the display will confirm what you have chosen; when it shows the desired setting or value, press ENTER.

Leading Zeroes

You will often need to enter numbers via the keypad.

If the function you have selected requires that you enter a two-digit number, you must enter a leading zero when entering a single digit number. Example: Enter 07 instead of 7.

If the function you have selected allows for entering a one-digit number only and does not accept a two-digit number, do not enter a leading zero.

SEGMENT AND SONG MODES

The SP-1200 has two main operational modes. In segment mode, you create individual segments of rhythms, typically a few measures long. In song mode, you chain these segments together to make a complete song. Example: The intro, verse, chorus, and solo of a song could all be separate segments; combining these together in the proper order would create a song.

Segment and song modes are selected by the left-most button in the Programming module. In song mode, the labels above the eight buttons to the right of the SEGMENT/SONG button apply; in segment mode, the labels below the eight buttons to the right of the SEGMENT/SONG button apply.

THE TRANSITORY NATURE OF SEGMENT MODE

Segment mode is the SP-1200's "scratchpad" where you work up rhythmic segments prior to combining them in songs. Therefore, tempos, mixes, and most other segment parameters set while in segment mode (except tuning and dynamics) are retained only while you are in segment mode. When going into song mode, the song parameters for tempo, mix, and so on replace the parameters worked out in segment mode. If you return to segment mode from song mode, the segment parameters for tempo, mix, etc. will be those of the last song you selected.

The Right Arrow/Left Arrow Buttons (*stepping and "fast forwarding"*)

The Right Arrow and Left Arrow buttons step through values shown in the display. Each time you press one of these buttons you will step through one value. Holding down these buttons "fast forwards" (in the case of Right Arrow) or "fast backwards" (in the case of Left Arrow) through the values.

The Current Song Display

When you first turn on the SP-1200, the display will show the Current Song and tempo for that song. The Current Song remains as is until changed.

The Current Segment Display

When you go into segment mode, the display will show the Current Segment and tempo for that segment. The Current Segment remains as is until changed.

BEEP MESSAGES

The SP-1200 confirms certain actions (as described later in the manual) by sending out a "beep" tone. When monitoring via the MIX OUT jack, the beep level is set by the METRONOME VOLUME in conjunction with the MIX VOLUME. Since the MIX VOLUME serves as a master control for all SP-1200 sounds (drums and metronome), if MIX VOLUME is turned down you won't hear anything — and that includes beep messages.

Part 1: GETTING READY

- 1A Setup**
- 1B Instant Gratification!**
- 1C Background: Performance Module**
- 1D Selecting Drum Sounds**
- 1E Adjusting the Mix**
- 1F Tuning the Drums/Changing Decay**
- 1G Background: Additional Sounds Using the Setup Module**
- 1H Accessing/Exiting Multilevel**
- 1I Accessing /Exiting Multipitch**
- 1J Accessing Dynamics**
- 1K Storing (Defining) a Mix**
- 1L Auditioning (Selecting) a Mix**
- 1M Assigning Drum Sounds to Output Channels**
- 1N Dynamic Allocation**
- 1O Playing Back Segments**
- 1P Setting Tempo**
- 1Q Programming the Metronome**

GETTING READY

1A SETUP

IMPORTANT!! Before you turn on your SP-1200: There is a 115/230 Volt selector switch on the back of the SP-1200, next to the on-off switch. Make sure the AC voltage indicated on the switch agrees with the AC voltage present in your part of the world. If not, change the switch settings with a small screwdriver.

1. Set up the SP-1200 on a hard surface.
2. Patch a standard, guitar-type patch cord between the MIX OUT jack on the rear panel and a high quality amp or mixing console. The better the sound system, the more life-like the sound of the SP-1200.
3. Make sure the ON-OFF switch is in the OFF position. Plug the line cord into a properly wired three-wire AC outlet.
4. Turn the MIX VOLUME and METRONOME VOLUME controls all the way to the left.
5. Turn the ON-OFF switch to ON; the SP-1200 will run a self-test where all LEDs will light up briefly to show they're working properly. The liquid crystal display will light up and read: SP-1200 Insert Diskette.
6. Insert a formatted SP-1200 diskette, label side up, and the display will say: Loading Software, Loading Sequences, and Loading Sounds while the disk drive is doing each task.
7. Now we're ready to go! Press the RUN/STOP switch (located near the lower right-hand corner of the SP-1200) to start the drums, then turn up the MIX VOLUME control to hear a demo of what this baby can do. Adjust the monitor system levels to suit. If you hear the drums, all is well — to proceed, press RUN/STOP a second time and the song will stop.

1B INSTANT GRATIFICATION!

Yes, the SP-1200 is an extremely versatile device. But that versatility means that in order to learn about all the options, you'll have to spend a few hours with the SP-1200 and this manual.

If you're patient enough to actually do that right now, we salute your willpower. Chances are, though, you can hardly wait to start making some sounds. So, we'll short circuit the learning process a bit with this little exercise. Follow these steps **EXACTLY** as given.

1. Hook up the SP-1200 as described previously, then turn up the METRONOME VOLUME control about halfway. MIX VOLUME and the monitor system levels should be set as described in the previous Section.
2. Push the SONG/SEGMENT button until the SEGMENT light glows.

3. Locate the ten number buttons (0 - 9) towards the right of the SP-1200. Press 9 and then press 9 again. The display says Seg 99 and shows the tempo in Beats per Minute. Seg 99 will have a default length of two measures (which we'll leave as is for now).
4. Hold down RECORD and press RUN/STOP; both their LEDs will be lit to indicate you are in record mode. You should also hear the metronome (if not, check the METRONOME VOLUME control).
5. The eight large buttons along the bottom of the SP-1200 play various drum sounds. Play in time with the metronome, and whatever you play will be recorded. You will have two measures to play to; they repeat over and over again to allow for easy multitracking of drum parts. To play additional drum sounds, hit the SELECT button to audition other banks of drums.
6. For now, you can only play 8th notes; later on, we'll cover how to play all the other note values.
7. When you've finished recording, press RUN/STOP (the RUN/STOP light goes out). To play back what you've recorded, press RUN/STOP again (RUN/STOP light glows).
8. Congratulations! You have now experienced about 0.5% of the SP-1200's capabilities. To find out about the other 99.5%, keep reading.

1C BACKGROUND: THE PERFORMANCE MODULE

This module is where you select drum sounds, tuning, drum mix, and so on.

All of these adjustments reset to their default values when the SP-1200 is turned off. However, eight different drum mixes may be stored in memory and recalled when creating a song.

1D SELECTING DRUM SOUNDS

The row of eight large buttons (Drum Play buttons) along the bottom of the SP-1200 play the different drum sounds.

The SELECT button (left of Play buttons) chooses between four different banks of drum sounds. To audition the drums, select a bank with the SELECT switch, then play the Play Buttons. Listen to all four banks to familiarize yourself with the available sounds on each disk.

GETTING READY

1E ADJUSTING THE MIX

1. Press the TUNE-MIX-MULTI switch (towards the upper left corner of the Performance module) until the MIX LED lights. The display graphically shows the level of each drum in the selected bank.
2. Vary the slider above the corresponding Drum Play button to vary the level of each individual drum. As soon as you move the slider, the graph in the display will jump to its new position.
3. Note that MIX settings are not stored while in segment mode. If you come up with a particularly good mix, you can save the mix as described in Section 1K.

1F TUNING THE DRUMS/CHANGING DECAY (SET-UP 18)

1. You may tune or change the decay time of any of the drum sounds. Cymbals may also be tuned, but due to the nature of the SP-1200's tuning change hardware, the sound will probably be different from your expectations of a "tuned cymbal" (SP-1200 tuning creates more of a ring modulation type of effect).
2. Each sound may be programmed to have its tuning or decay (but not both) varied by its associated slider while the TUNE/DECAY LED is lit. Whether the slider affects tuning or decay is programmed in the SET-UP module. Activate SETUP, then key in 18. Play the desired sound. The display will indicate whether the sound is "TUNED" or "DECAYED". Key in 1 if you want the slider to vary the tuning, or 2 if you want the slider to vary the decay. Drums and claps default to tuning variations, while cymbals default to decay variations.
3. Press the TUNE-MIX-MULTI switch until the TUNE/DECAY LED lights. Sounds which are set for decay mode have a small diagonal line above the drum sound number. The display graphically shows the relative tuning or decay of each drum; the center line indicates normal pitch or decay.
4. Vary the slider above the corresponding Drum Play button to vary the individual tuning (plus or minus a fifth) for each drum set for tuning change. As soon as you move the slider, the corresponding display graph will jump to its new position. The higher-pitched the drum, the taller the bar; the lower-pitched the drum, the shorter the bar. With those sounds set for decay change, varying the slider changes the amount of decay. The longer the decay, the taller the bar; the shorter the decay, the shorter the bar.

1G BACKGROUND: SETTING UP ADDITIONAL SOUNDS USING THE SETUP MODULE

This is where things really start to get interesting, thanks to a cute little trick called multi-mode and its offshoots, multipitch and multilevel.

Multipitch takes a single drum sound or handclap and “spreads” its pitch over all eight Drum Play buttons, with the leftmost button playing the highest pitch and the rightmost button playing the lowest pitch. With cymbals, multipitch spreads the decay with the leftmost button playing the longest decay and the right most button playing the shortest decay.

Multilevel takes a sound and spreads the level over all eight Drum Play buttons, with the leftmost button playing the softest level and the rightmost button playing the loudest level.

1H ACCESSING/EXITING MULTILEVEL (SET-UP 12 & 13)

1. Activate the SET-UP module by pressing its button. Its LED will glow, and the display will ask for a function from the list printed to the right of the SET-UP button.
2. Key in 12 (MULTI-LEVEL). Select the sound to be multileveled by using SELECT to select the Bank containing the sound, then press the sound’s Play button.
3. To edit the factory preset levels, select MIX with the TUNE-MIX-MULTI switch and vary the sliders to change levels. The display shows each sound’s relative level. When the levels are set as desired, press ENTER.
4. While in multilevel, you may also edit the pitch for each level of the sound (or the decay if the sound is set up for decay variations instead of tuning variations). Press the TUNE-MIX-MULTI button and select TUNE/DECAY; the display shows the relative pitch of each sound. Use the sliders as described earlier to set the pitch.

Whenever you select the bank containing the multileveled sound, it will still be in multi-level mode. This will be indicated by the MULTIMODE LED (next to the TUNE-MIX-MULTI switch) being on.

To Turn Off Multilevel:

1. Activate the SET-UP module (if it is not already) and select the bank to “de-multi-level”. The display should be asking “Set-up Function?”; if it instead shows the bar graph, press ENTER to alert the computer it can move on to the next task.
2. Key in 13 (EXIT MULTI-MODE). When the display asks “Exit Multi Mode?”, press YES. The Bank will return to its normal preset assignments.

Note: If you later change the mix of a segment or song that contains multilevel effects, these will all increase or decrease proportionately in level. For example, if you programmed some soft sounds and medium level sounds, increasing the mix level will bring up all the sounds by an equivalent amount (within the dynamic range limits of the drum machine, of course).

GETTING READY

1I ACCESSING/EXITING MULTIPITCH (SET-UP 11 & 13)

1. Activate the SET-UP Module by pressing its switch. Its LED will glow, and the display will ask for a function from the list printed to the right of the SET-UP switch.
2. Key in 11 (MULTI-PITCH). Select the sound to be multi-pitched by using SELECT to select the bank containing the sound, then press the sound's Play button. That sound will now be spread across the Play buttons at factory pre-selected pitches.
3. If you want to edit the factory preset pitches, select TUNE/DECAY with the TUNE-MIX-MULTI switch and vary the sliders to change pitch. The display shows the relative pitch of each sound. When the tuning is as desired, press ENTER.
4. While in multipitch, you may also edit the level for each sound of the multipitched Bank. Press the TUNE-MIX-MULTI button and select MIX, then use the sliders as described earlier to set the levels.

Whenever you select the bank containing the multipitched sound, it will still be in multipitch mode. This will be indicated by the MULTIMODE LED (next to the TUNE-MIX-MULTI switch) being on.

To Turn off Multi-pitch:

1. Activate the SET-UP module (if it is not already) and select the bank to "de-multipitch". The display should be asking "Set-up Function?"; if it instead shows the bar graph, press ENTER to alert the computer it can move on to the next task.
2. Key in 13 (EXIT MULTI-MODE). When the display asks "Exit Multi Mode?", press YES. The Bank will return to its normal preset assignments.

Notes: Once a segment has been recorded with sounds at particular pitches, these pitches cannot be modified after the fact for that segment unless you erase the sound and re-record it.

You can enter and exit multipitch and multilevel modes while recording to gain additional drum sounds. Pitch changes can also be recorded along with the segment.

1J ACCESSING DYNAMICS (SET-UP 14)

Yes, the harder you hit the buttons the louder the sound. We did this in such an incredibly ingenious way that engineers across the country will burst out laughing when they take the SP-1200 apart for the first time.

1. Activate the SET-UP Module by pressing its switch. Its LED will glow, and the display will ask for a function from the list printed to the right of the SET-UP switch.
2. Key in 14 (DYNAMIC BUTTONS). The display asks whether you want dynamic buttons or not; press YES if you do.
3. Hit the buttons to check out the dynamics.

All buttons for all banks are now dynamically responsive. To turn off dynamics, select Function 14 in the SET-UP module and when the display asks “Dynamic Buttons?”, press NO.

1K STORING (DEFINING) A MIX (SET-UP 15)

The SP-1200 memorizes up to eight different mixes; each mix contains the level data for all four banks. When creating a song, this mix information can be stored as part of the song so that different songs (or different sections of the same song) have different mixes. To store a mix for later use:

1. After perfecting the mix, activate the SET-UP Module by pressing its switch. Its LED will glow, and the display will ask for a function from the list printed to the right of the SET-UP switch.
2. Key in 15 (DEFINE MIX). The display will ask “Save Current Mix As Mix #_”. Assign a number from 1 to 8 (do not include leading zeroes in this case); when the display confirms your choice, press ENTER.

We will describe how to audition a particular mix in the next Section; in Section 3G, we’ll cover how to select the desired mix when creating a song.

Note: Channel assignments (Section 1M) and pitch/decay information (Section 1F) are also stored with the mix, thereby allowing programmed channel changes and pitch/decay changes.

1L AUDITIONING (SELECTING) A MIX (SET-UP 16)

You may select an already defined drum mix (see Section 1K) which will assign the mix levels to the drum sounds in all four banks.

1. Activate the Set-Up module by pressing its switch. Its LED will glow, and the display will ask for a function from the list printed to the right of the SET-UP switch.
2. Key in 16 (SELECT MIX). The display will ask for the desired mix number (as defined according to the instructions in Section 1K). Enter a number from 1 to 8 (do not include leading zeroes in this case); when the display confirms your choice, press ENTER.

GETTING READY

1M ASSIGNING DRUM SOUNDS TO OUTPUT CHANNELS (SET-UP 17)

The MIX OUT jack carries a mono mix of the SP-1200's eight individual drum outputs; MIX VOLUME regulates the overall level.

The SP-1200 also has eight individual output channel jacks. These are typically used in the studio to send different sounds to different mixing console channels.

Since there are more than eight drum sounds, there is a default pre-set assignment that determines which drums go to which channels. However, this may be changed in the following manner:

1. Activate the SET-UP Module by pressing its switch. Its LED will glow, and the display will ask for a function from the list printed to the right of the SET-UP switch.
2. Key in 17 (CHANNEL ASSIGN). The display asks you to select a sound; select it using the appropriate Bank select and Drum Play buttons. Note that you can consecutively hit different play buttons to see the channels to which different sounds are assigned.
3. The display now confirms your Drum Sound choice and shows its existing output channel assignment. To change this assignment, enter a number from 1 to 8 via the keypad. The drum sound will now appear at the like-numbered output jack on the rear panel. This information is stored with mixes (Section 1K).

Note: There are 3 different types of filtering on the outputs. Channels 1 and 2 have dynamic filters whose bandwidth varies in time, channels 3, 4, 5, and 6 are filtered by a constant amount, and channels 7 and 8 are totally unfiltered. Knowing this can be handy when assigning sampled sounds, as different sampled sounds may respond better to particular amounts of filtering. To hear the filter effects, select a drum sound and assign it to each channel in succession, carefully noting the difference in sound between the different channel assignments.

- The unfiltered versions of each output are available by inserting a standard phone plug into the individual output jacks. This will also disconnect the channel from the MIX OUT jack. Note that without any filtering, some sounds may sound very "gritty" and noisy. You may need to "EQ" the sound at the mixing board. The filtered versions of each individual output are available by using a stereo plug and connecting to the ring of the plug. The MIX OUT jack reflects the filtered outputs of all eight channels.

1N DYNAMIC ALLOCATION (SET-UP SPECIAL FUNCTION 22)

Normally, if two drum sounds are assigned to the same output channel and they are played at the same time, one of the sounds will be cancelled (sometimes called channel ripoff). By using the Dynamic Allocation function, the second drum will be automatically assigned to the adjacent channel with the same type of filtering, thus preventing the cancellation. The channel pairs 1,2 3,4 5,6 7,8 have the same type of filtering on them.

1. Activate the SET-UP module by pressing its switch. Its LED will glow, and the display will ask for a function from the list printed to the right of the SET-UP switch.
2. Key in 23 (SPECIAL). Now move slider #1 to catalog the various special functions.
3. Key in 22 to select dynamic allocation. The display shows the channel pairs 1,2 3,4 5,6 7,8 with NO under each pair. To enable dynamic allocation for a pair of channels, press YES then press ENTER to advance to the next pair of channels.
4. De-activate the SET-UP module.

10 PLAYING BACK SEGMENTS

You can record and play back 100 rhythm patterns called segments. These are numbered from 00 through 99. Several segments were loaded into the SP-1200 at the factory; here is how to play them.

1. Press the SONG/SEGMENT button a few times. The SEGMENT light shows you are in segment mode, and can play back or record segments. The SONG light shows you are in song mode. For now, choose the segment mode. The display will show the segment number and tempo in Beats per Minute.
2. To select a different segment, key in two digits with the keypad. Leading zeroes must be entered for single digit segments (i.e. press 0 then 7 to select segment 07).
3. Make sure METRONOME LEVEL is up so that you can hear any beep messages from the SP-1200 in subsequent steps.
4. Press RUN/STOP. Several things will happen: the segment will play continuously, the RUN/STOP light will glow (except for a blink at the beginning of the segment), and you will hear a metronome clicking along with the segment (adjust METRONOME LEVEL to suit). If instead of hearing a rhythm pattern you hear a beep, the segment you've selected has never been put in record mode (which means it cannot contain any drum sounds). Key in a different segment number. To stop a segment, press RUN/STOP a second time. A rear panel jack parallels the RUN/STOP switch for remote applications.
5. Repeat step 2 to select another segment. If the SP-1200 is running, the new segment will begin playing as soon as the current segment ends. If the current segment ends and the SP-1200 stops (RUN/STOP light goes off), the new segment you've selected is empty.

GETTING READY

Note: Remember as you go through these examples that the ENTER button, in addition to its normal enter function, is a fail-safe/reset button as long as the display shows a flashing cursor. For example, if you accidentally enter the wrong first digit of a segment number, before doing anything else press ENTER. This restores the SP-1200 to where it was before you hit the wrong key.

1P SETTING TEMPO

The tempo may be varied from 40 to 240 Beats Per Minute. Segment tempo settings are “remembered” by the SP-1200 only while you are in segment mode. If you switch over to song mode (as described later), the SP-1200 acquires the tempo of the selected song. If you then switch back to segment mode, the SP-1200 will retain this song tempo.

1. To change tempo (the SP-1200 may be stopped or running), press TEMPO. The cursor will flash under the first digit of the tempo display. There are five ways to enter tempo:
 - Press the Right Arrow button once to increase the tempo by 1 BPM. Hold the button down to increment through the tempo 1 BPM at a time.
 - Press the Left Arrow button once to decrease the tempo by 1 BPM. Hold the button down to decrement through the tempo 1 BPM at a time.
 - Use the Keypad to enter the tempo directly, accurate to 1/10th BPM (four digits). Leading zeroes must be entered.
 - Use Slider #1 to vary the tempo.
 - “Tap” the tempo you want on the TAP/REPEAT button. The SP-1200 will compute the time between taps and translate that to Beats Per Minute. If desired, you can tap continuously and when the groove feels just right, stop tapping; the last time interval between taps will be remembered as the tempo. The rear panel TAP/AUTO REP jack accepts a momentary-action, normally open footswitch if you want to tap with your foot instead of your hand.
2. When the display shows the desired tempo press ENTER. This tempo will apply to all segments when you are in segment mode.

1Q PROGRAMMING THE METRONOME

When playing back or recording segments, you can program the metronome for a variety of different beats. The metronome produces an accented click on the first beat of each measure and a softer click on the other beats.

1. The SP-1200 must be stopped (RUN/STOP light off), and the SEGMENT light must be on.
2. Press METRONOME. The Right Arrow and Left Arrow buttons step through the various metronome options:

Off no metronome output

1/4 quarter notes (this is the default value)

1/4 t quarter note triplets

1/8 eighth notes

1/8 t eighth note triplets

1/16 sixteenth notes

1/16t sixteenth note triplets

1/32 thirty-second notes

1/32t thirty-second note triplets

Click sends a 24 pulses-per-quarter-note signal out the rear channel

MET OUT jack for synchronizing other devices to the SP-1200

3. When the display shows the desired metronome value, press ENTER.

Note: The higher metronome speeds are useful when recording a fast, complex drum part since you may slow the tempo way down, yet still have clicks occurring regularly enough so that you know where you are in the segment. (If the tempo is very slow and you select, for example, quarter note clicks, the clicks occur too far apart to be helpful.)

Part 2: RECORDING SEGMENTS

- 2A Recording a Segment: Overview**
- 2B Erasing a Segment**
- 2C “Dimensioning” a Segment**
 - Standard Dimensioning**
 - Real Time Dimensioning**
- 2D Understanding Auto Correct**
- 2E Setting Auto Correct**
- 2F Recording a Segment in Real Time**
- 2G Recording a Segment in Step Time**
- 2H Erasing a Specific Drum Sound**
- 2I Erasing a Specific Note of a Drum Track**
- 2J Copying and Appending Segments**
- 2K Adding Swing**
- 2L Swapping Drum Sounds**
- 2M Copying Sounds**
- 2N Clearing the Memory**
- 2O Check Remaining Memory**

RECORDING SEGMENTS

2A RECORDING A SEGMENT: OVERVIEW

There are two ways to record a segment, real time and step time. In both cases, recording initially consists of:

1. Programming the metronome (if necessary).
2. Erasing previously recorded sounds (if necessary).
3. Defining the segment's time signature and the number of measures in the segment ("dimensioning" the segment).
4. Setting Auto Correct (to correct for timing errors in real time recording; this also determines the step rate in step time recording, and the repeat rate when recording repetitive "drum rolls" as described in Section 2F).
5. Selecting the desired bank of drum sounds for recording (this may be changed at any time during the recording process).
6. In real time, entering record mode and playing drum sounds (the SP-1200's memory remembers what you play) in time with the metronome; in step time, entering record mode and stepping through each step of the segment, playing drum sounds as required at the various steps. While in real time, you can record pitch changes, enter/exit multipitch or multilevel mode, change Auto Correct, change tempo, or switch banks if desired.
7. After recording the segment, you can make changes with either real time or step time editing.

We have already covered the first step in recording (programming the metronome), as well as the fifth step (selecting different drum sounds). Now let's cover the remaining steps in the order given above.

2B ERASING A SEGMENT

Erasing a segment clears out all existing drum sounds in that segment, and automatically re-dimensions the segment to two measures of 4/4. Before erasing a segment, always check whether that segment already contains something you want to keep. To erase:

1. Stop the SP-1200, confirm that you are in segment mode, and press ERASE.
2. The display helpfully mentions that you can erase either a sound or segment. Erasing a sound will be covered later; to erase a segment, enter the two-digit segment number. The display will replace the flashing cursor with the number you entered, and ask you to confirm that this is the segment you want to erase.
3. If this is the segment to be erased, press YES. If not, press NO and the SP-1200 will return you to step 2.

RECORDING SEGMENTS

4. After erasing, the display will return to whatever segment you had keyed in prior to starting the erase process. For example, if you had first selected segment 01 but then decided to erase segment 51, after erasing 51 you would return to 01. If you want to continue working with segment 51, make sure you key it back in again so that 51 appears in the display.

2C DIMENSIONING A SEGMENT (SETTING TIME SIGNATURE AND/OR BAR LENGTH)

“Dimensioning” a segment defines the segment’s time signature (from 1 to 99 beats per measure), and the number of bars and beats per segment (up to 99 bars and 99 beats; thus, you could have a segment that was, say, 2 measures and 3 beats long). If desired, each segment may be dimensioned differently. The time signature cannot be changed after a segment has been recorded, however, the segment length can be changed after recording by using the copy and truncate functions. If you are not familiar with time signature notation, see Appendix B.

After erasing a segment, it assumes a length of two measures and a 4/4 time signature. If this dimensioning suits your musical needs, skip ahead to the next section. Otherwise, there are two ways to dimension a segment: standard dimensioning and real-time dimensioning. Make sure you are in segment mode, then proceed with whichever procedure seems more suitable for re-dimensioning the segment.

Part 1: Standard Dimensioning

1. Set the time signature by pressing TIME SIGNATURE. The display will probably show the 04/4 default time signature and a cursor will be flashing under the first digit. There are three ways to enter the desired time signature numerator (number of beats per measure):
 - Press the Right Arrow button once to increase the numerator value by one. Hold the button down to increment through the values one digit at a time.
 - Press the Left Arrow button once to decrease the numerator value by one. Hold the button down to decrement through the values one digit at a time.
 - Use the keypad to enter the numerator directly. Leading zeroes must be entered.
2. When the display shows the desired time signature numerator press ENTER. The cursor will now flash under the first digit of the denominator (i.e. the rhythmic value of each beat in the measure); the default value is 4.
3. There are four denominator values: 4 (quarter note), 8 (eighth note), 16 (sixteenth note), and 32 (thirty-second note). Tap the Right Arrow key to step from longer to shorter rhythmic values; tap the Left Arrow key to step from shorter to longer rhythmic values (or hold the button to “fast forward”).

RECORDING SEGMENTS

4. When the display shows the desired time signature denominator press ENTER. The time signature will now be stored with the segment.
5. To set the number of measures and beats in the segment (segment length), press SEGMENT LENGTH. The display will probably show the default value of 02 bars, 00 beats.
6. To increase the number of measures in a segment (up to 99), press Right Arrow. Tap this button to go forward a digit at a time, or hold it down to “fast forward”. To decrease the number of measures in a segment, (down to 1), tap or hold Left Arrow. You may also use the keypad to enter the number of bars.
7. When the display shows the desired segment length, press ENTER. You may now select the number of additional beats in the segment.
8. To increase the number of additional beats in the segment (up to 99), press Right Arrow. Tap this button to go forward a digit at a time, or hold it down to “fast forward”. To decrease the number of additional beats in the segment, (down to 1), tap or hold Left Arrow. Or, enter the number of additional beats with the keypad.
9. When the display shows the desired number of additional beats in the segment, press ENTER. Dimensioning is now complete. To re-dimension a segment after it has been recorded, see Part 3: Truncation.

Part 2: Real-Time Dimensioning

Real-time dimensioning mode is useful when you want a segment’s length to be other than some number of whole measures and beats (i.e. if you wanted 2 measures, 1 beat, and just a tiny bit more).

1. Press SEGMENT LENGTH then press RUN/STOP; the metronome will click and the display will count off the beats and measures as they go by.
2. After the appropriate number of beats and measures have gone by, press RUN/STOP a second time. If you do not press RUN/STOP precisely on the beat, it will be auto corrected by the SP-1200 (see next section for more information on Auto Correct).
3. If you miss the desired end point of the segment, hit RUN/STOP again to re-start the process. Press RUN/STOP again when the segment is the desired length. Also note that you can edit this setting (until the segment is recorded) by using the Right Arrow, Left Arrow, and keypad buttons (this works similarly to step 8 in Part 1).

Note: If you dimension to more than an even beat (for example, 2 bars, 1 beat, and an eighth note), the display will indicate a + sign.

RECORDING SEGMENTS

Part 3: Truncation

Truncation mode is used to shorten the length of an existing segment.

1. Select the segment you wish to truncate and press Segment Length. The display will read: Truncate Length and show the number of bars and beats in the existing segment.
2. Enter the desired segment length in bars using the keypad or the cursor keys. When the correct number of bars is chosen, press Enter.
3. Enter the desired number of additional beats in the segment, then press Enter again. The display will read: Truncate Length Confirm Yes/ No.
4. Pressing Yes will truncate the segment to the selected length. Pressing No will return you to segment mode.

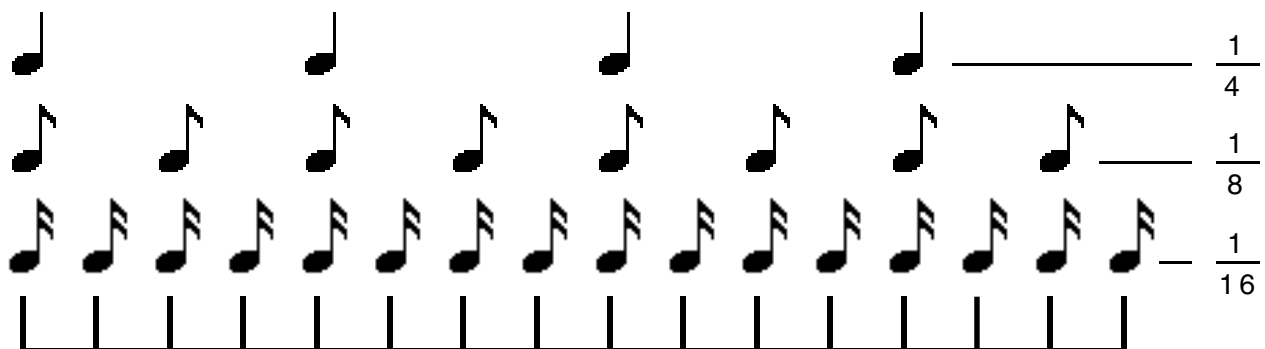
Note: If you select a segment length that is longer than the original length, the display will tell you to Use Copy to Lengthen Segment.

2D UNDERSTANDING AUTO CORRECT

Auto correct lets you create patterns with perfect timing by placing whatever drum sound you play on your choice of the nearest eighth note, eighth note triplet, sixteenth note, sixteenth note triplet, thirty-second note, or thirty-second note triplet. (For more information on rhythmic notation, see Appendix B.)

To understand how this works, consider Fig. 2-1, which shows one measure of 4/4 music (there are four quarter notes, eight eighth notes, and sixteen sixteenth notes in a measure of 4/4).

Fig. 2-1



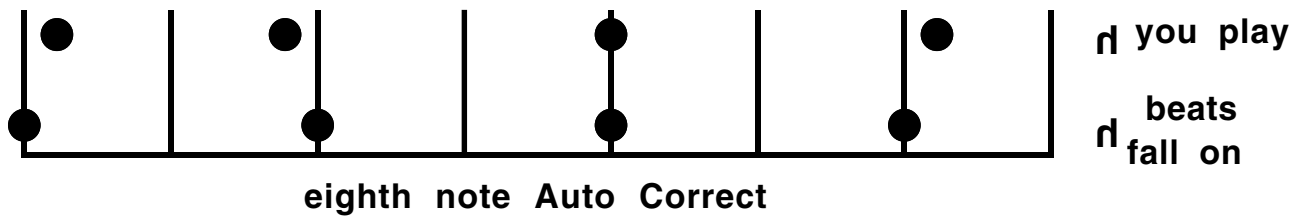
Suppose you want to record a bass drum on every quarter note, but your sense of timing is a little shaky. The upper row of dots in Fig. 2-2 shows where you might have played the

RECORDING SEGMENTS

four bass drum beats. The first one is a little behind the beat, the second a little in front of the beat, the third right on the beat, and the fourth slightly behind the beat. The lower row of dots in

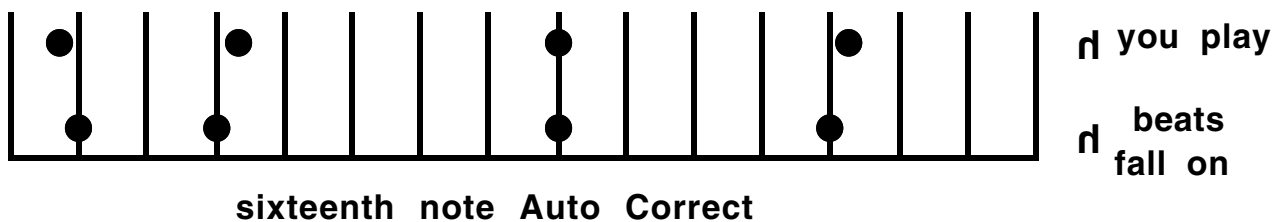
Fig. 2-2 shows how setting Auto Correct to eighth note resolution puts each drum sound on the nearest eighth note, thereby correcting a not-so-tight bass drum part for perfect timing.

Fig. 2-2



Now consider Fig. 2-3, which shows Auto Correct set to sixteenth note resolution. In this case, the beats you played have been assigned to the nearest sixteenth note — which is fine on beats 3 and 4, but not on 1 and 2.

Fig. 2-3



This illustrates an important point: Use the least amount of resolution needed. If you are recording a simple snare back beat, there's no point in using an Auto Correct setting with any more resolution than eighth notes. To record something more complex, set a finer resolution (such as sixteenth or even thirty-second notes).

You may change Auto Correct while you are in segment mode, whether the SP-1200 is running or stopped. If you change Auto Correct while the SP-1200 is running, the change takes effect at the end of the segment. Changing Auto Correct as desired takes the pressure off of recording long drum parts — use low resolution to record most of a part, then switch over to finer resolution to record more complex rhythms. Note that recording triplets is easy, since there are four triplet Auto Correct options, and that alternating between triplet and non-triplet Auto Correct modes lets you record complex polyrhythms.

RECORDING SEGMENTS

Another option is high resolution mode, where the SP-1200 places beats exactly where you play them rather than “rounding them off” to the nearest specified note. This allows syncopation, beats which slightly lead or lag the rhythm, and so on.

When programming in step time, the Auto Correct setting determines the rhythmic value of each step. For example, with an Auto Correct setting of 1/8, you will step through the song an eighth note at a time. Selecting HiRes mode steps through the song at a rate equivalent to sixty-fourth note triplets. See later for more information on step time recording.

2E SETTING AUTO CORRECT

To set Auto Correct, the SP-1200 must be in segment mode. The SP-1200 can be stopped or running (recording).

1. Press AUTO CORRECT. The display shows the current Auto Correct value (default is 1/4).
2. The Right Arrow and Left Arrow buttons step through the various Auto Correct options: 1/4 (quarter notes), 1/4t (quarter note triplets), 1/8 (eighth notes), 1/8t (eighth note triplets), 1/16 (sixteenth notes), 1/16t (sixteenth note triplets), 1/32 (thirty-second notes), 1/32t (thirty-second note triplets), and HiRes (no autocorrection)
3. When the display shows the desired Auto Correct value, press ENTER.

Note: Changing Auto Correct does not affect any parts recorded prior to the change.

2F RECORDING A SEGMENT IN REAL TIME (ALSO “REPEAT” RECORDING)

Now that you’ve selected a segment and dimensioned it, you’re ready to record drum patterns into the segment.

1. If necessary, program the metronome and Auto Correct resolution. Set pitch, mix, and other parameters as desired.
2. While holding down RECORD, push RUN/STOP so that the RUN/STOP light glows; the metronome will start. The RUN/STOP LED will blink off at the beginning of the segment, and there will also be an accented metronome beat at the beginning of each measure.
3. Play the various drums where you want them to occur in the segment. The segment will repeat over and over, so you may “overdub” as many drum beats as you like. For example, record a basic bass drum part first, then snare drum sounds, then some differently tuned snare drum sounds, cowbell, etc. Any drum sounds you record during one cycle of the segment will play back on the next cycle of the segment.

RECORDING SEGMENTS

4. For drum roll effects (repeat recording), hold down the TAP/REPEAT button and the Drum Play button. The drum sound will repeat, at the rate set by Auto Correct, for as long as you hold the TAP/REPEAT and Drum Play buttons. If a drum is multileveled or multipitched, you can obtain some great effects by holding down the TAP/REPEAT button and sequentially pressing down the various Play buttons for the multileveled or multipitched Bank. Plugging a momentary-action, normally open footswitch into the rear panel TAP/AUTO REP enables auto repeat for as long as the footswitch is pressed down.
5. Several parameters can be changed while recording for special effects (or just to make your life easier, for that matter).
 - a. Switch banks to change drum sounds.
 - b. Change tempo by pressing the TEMPO button.
 - c. Change Auto Correct by pressing AUTO CORRECT and using the Left and Right Arrow buttons.
 - d. Change the mix by selecting MIX with the TUNE/MIX/MULTI button and varying the sliders. Real time level changes are not recorded along with the segment; to record different drum levels, either use the dynamic buttons option (Section 1J) or access multilevel (see step “f” below).
 - e. Change pitch by selecting TUNE/DECAY with the TUNE/MIX/MULTI switch. To record pitch changes, vary the slider as you play the Play buttons. Hint: Don’t forget about the wonders of Auto Repeat; holding down REPEAT, a drum sound, and varying its pitch while recording produces some absolutely fabulous effects (in particular, try the cowbell).
 - f. Access multimode by activating the SET-UP module (however, its LED will not light if accessed during recording) and proceed as described in Sections 1H and 1I. You may also exit multimode while recording.
 - g. Punch out of recording temporarily by pressing RECORD. The RECORD light will go out. You may now practice a part, check out drum sounds for sonic compatibility with a segment, and so on. To resume recording, press RECORD again; the light will go on and you’re ready to roll.
6. Repeat steps 3 through 5 until you have recorded the complete drum part for that segment.

2G RECORDING A SEGMENT IN STEP TIME

Here is an alternate way to record and edit drum sounds which is particularly helpful with unusual rhythms.

1. If necessary, program the Auto Correct resolution. Auto Correct determines the rate at which you step through the song; for example, when set to 1/16th notes you will step through the segment a sixteenth note at a time. If some notes fall at other Auto Correct times (such as triplets), you may change Auto Correct at any time to "land" on other rhythmic values.

Set the initial pitch, mix, and other parameters as desired.

2. Press the STEP PROGRAM button; the SP-1200 will automatically go into step time record mode. There are two ways to step through the segment: Hold RUN/STOP to run through the segment at the current tempo setting, or use the Right and Left Arrow buttons to increment a step at a time in either direction. The display will indicate your exact location in the segment in measures and beats, and show the step rate. It will also indicate which sounds are recorded on that beat (up to four sounds; more than four sounds is indicated by a + symbol in the display).
3. Play the various drums where you want them to occur in the segment, or hold ERASE and press any Drum Play buttons containing sounds to be erased. The display will indicate up to four drums at a time. If you record more than four sounds, a + symbol will appear in the display.
4. Change banks if desired and record more drum parts.
5. Repeat steps 3 and 4 until you have recorded the complete drum part for that segment. Note that unlike real time recording, you cannot change pitch, enter/exit multimode, alter level, etc. while in step program mode (although, of course, a bank set up as a multi-mode bank of drum sounds will record just like any other bank). Instead, exit step by pressing either ENTER or STEP PROGRAM, make the desired change, and re-enter step time.

Note: Step time can also be used to edit or examine segments which have been recorded in real time, and additional parts can be overdubbed in real time over a segment recorded in step time.

RECORDING SEGMENTS

2H ERASING A SPECIFIC DRUM SOUND

When you are in segment mode and editing a segment, you may erase a drum/percussion sound wherever it appears in the segment.

1. Stop the SP-1200, confirm that you are in segment mode, and press ERASE.
2. The display helpfully mentions that you can erase either a sound or segment. To erase a sound, hit the appropriate Play button. The display will replace the flashing cursor with the name of the sound you entered, and ask you to confirm that this is the sound you want to erase.
3. If this is the sound to be erased, press YES to return to the Current Segment display. If not, press NO and the SP-1200 will return you to step 2.

2I ERASING A SPECIFIC NOTE OF A DRUM TRACK

Sounds can be erased in either step time or real time. As in the previous section, you must be in segment mode to erase sounds. To erase specific notes in a drum track in real time, the SP-1200 must be running and in record mode.

1. For real time erasing, set Auto Correct to high resolution mode before erasing. Otherwise, you will only be able to erase notes on the selected Auto Correct beats. For step time, select the lowest resolution Auto Correct value that still steps through all the notes you want to erase; or, choose HiRes, which steps through the segment at the equivalent of sixty-fourth note triplets.
2. Put the SP-1200 into record mode by holding down RECORD and pressing RUN/STOP so that the RUN/STOP light glows.
3. Press ERASE; while holding down ERASE, press the Play button or buttons corresponding to the sound or sounds you want to erase. For real-time erasing, press the Drum Play button(s) down just before the note or series of notes you want to erase, and release just after the note(s) you want to erase ends. To erase one note out of a rapid series of notes, tap the Drum Play button simultaneously with the note to be erased. For step-time erasing, while holding down ERASE press the Play button on the step where the sound to be erased occurs.

When erasing, you will hear the drum sound in its normal place as it is being erased, however, the next time the segment cycles the drum sound(s) you erased will be gone.

Note: For real time erasing, you may use Auto Correct settings other than high resolution for special effects. For example, suppose you recorded a series of four sixteenth note snare drum sounds with an Auto Correct of 16. If you erase using an Auto Correct setting of 8, you could erase only every eighth note, so two of the sixteenth notes would remain. Returning the Auto Correct to 16 would let you erase all four sixteenth notes. Note that this technique may be used to advantage if you want to “thin out” an overly complex drum part.

2J COPYING AND APPENDING SEGMENTS

You may copy a segment to one or more other segments. For example, suppose you set up a great hi-hat and bass drum pattern in segment 54. Now suppose you want segment 55 to contain a snare part recorded over the basic bass drum/hi-hat pattern, and segment 56 to contain a tom part recorded over the same basic bass drum/hi-hat part. Rather than having to re-create the hi-hat and bass drum pattern for segments 55 and 56, you may simply copy segment 54 to segments 55 and 56 (or any segment to any other segment, of course).

You may also link segments together or repeat a segment up to 99 times by copying a segment to itself (“append” mode).

1. You must be in segment mode and the SP-1200 must be stopped.
2. Press COPY. The display asks for the two-digit segment number to be copied, which may be keyed in via the keypad or accessed with the Right Arrow and Left Arrow buttons. When the display confirms your choice, press ENTER.
3. The display now asks for the two-digit segment number to be copied to, which may be keyed in via the keypad or accessed with the Right Arrow and Left Arrow buttons. When the display confirms your choice, press ENTER.
4. If you entered the same number for both the segment to be copied and the segment to be copied to (e.g. segment 23 to be copied into segment 23), the SP-1200 will go into append mode and the display will ask you how many times you want the segment to play, up to 99 times. For example, if you want segment 23 to play through three times instead of just once, you would enter 03. This number may be keyed in via the keypad or accessed with the Right Arrow and Left Arrow buttons. When the display confirms your choice, press ENTER.

Long segments use up a lot of memory. If you plan to repeat a segment several times, it's better to use the song mode repeat commands as described in Section 3F. However, if you plan to modify some parts of the appended segment, then it is necessary to append.

RECORDING SEGMENTS

2K ADDING SWING

While in segment mode, you may specify that a segment have a particular rhythmic swing to it. The SP-1200 defaults to a “swing factor” of 50%, which means that each quarter note is weighted so that the first eighth note takes up 50% of the quarter note, and the second eighth note takes up the other 50%. This is the way you would normally expect things to be.

However, you may change the swing factor to 54%, 58%, 63%, 67%, or 71%. For example, with a swing factor of 58%, the first eighth note spreads out slightly to take up 58% of the quarter note, while the second eighth note shrinks slightly so that it takes up 42% of the quarter note. This lets you program a swinging, less metronomic feel to individual segments.

To program a segment for swing, you must be in segment mode. Then, follow these steps:

1. The SP-1200 must be stopped (RUN/STOP light off). Press SWING.
2. The display shows the current swing setting for the selected segment. The Right Arrow and Left Arrow buttons step through the various swing options.
3. When the display shows the desired swing value, press ENTER.

Notes: Swing can help add a more human “feel” to a series of repeating segments. For example, if you repeat the same segment four times, try setting a swing factor of 54% for, say, the third segment. This results in a series of segments which are more psycho-acoustically interesting than merely repeating the same pattern over and over.

67% is considered the “classic” jazz swing factor, where the first eighth note is 2/3 of a quarter note, and the second eighth note is 1/3 of a quarter note (i.e. the second eighth note behaves more like an eighth note triplet). If this sounds too “perfect”, try a swing factor of 64% instead. The results will be similar, but the “feel” will be slightly different.

If you’re trying to record or erase in a segment which has a swing factor other than 50%, there are two cautions. To erase a specific note, you have to erase where the note would normally occur if the segment had a 50% swing factor. If you record while a segment is in swing mode, the beats may or may not fall where you want them to fall. Therefore, it’s best to go out of swing mode when recording or erasing, then re-enter swing mode after you’ve finished your alterations.

2L SWAPPING DRUM SOUNDS (SET-UP SPECIAL FUNCTION 18)

After recording the segment, you might come to the realization that a part would sound better with, say, the Electric Snare than the regular Snare. No problem! Just swap sounds...

1. Activate the SET-UP module and key in 23 (SPECIAL) then 18 (special function “swap sound”). The display will ask which original sound you want to swap. Press the appropriate play button.
2. The display now asks you for the sound you want swapped in place of the original sound; again, press the appropriate Play button. If the display confirms your choice, press YES. Otherwise, press NO to stop the swapping process. Note that if the original sound has pitch or other changes, the swapped sound will acquire the same characteristics.

Swapping is particularly useful when sampling. Suppose you record a part with one snare drum sound, then six months later you sample a new, mind-boggling snare sound. Simply record the new sample into one of the sound locations, and swap the existing snare sound with the new sound.

2M COPYING SOUNDS (SET-UP SPECIAL FUNCTION 17)

You may copy any sound into any other sound, thus replacing the original sound with the copy. Generally this function is used to replace existing sounds with sampled sounds; it will be described further in Section 4A.

1. Activate the SET-UP module and key in 23 (SPECIAL) then 17 (special function “copy sound”). The display will ask which sound you want to copy. Press the appropriate Play button.
2. The display now asks you for the destination (where the sound will be copied to); again, press the appropriate Play button. If the display confirms your choice, press YES. Otherwise, press NO to stop the copying process.

Hint: Copying sounds is also useful if you want one sound to go to several outputs. This lets you do such things as create harmonies.

RECORDING SEGMENTS

2N CLEARING THE MEMORY (SET-UP SPECIAL FUNCTIONS 12, 15, & 16)

If you reach a memory FULL condition (as indicated by the display), save what you have on disk. After doing this, you will probably want to clear some or all data in the SP-1200's memory to create more space. Another occasion where you might want to clear data is if you've finished working on a song/segment or group of songs/segments, saved the data, and want to start over from scratch. Here's how to clear data:

1. Activate the SET-UP module by pressing its switch. Its LED will glow, and the display will ask for a function from the list printed to the right of the SET-UP switch.
2. Key in 23 (SPECIAL). We hid the memory clearing functions in the SPECIAL section to make it harder to erase things accidentally. Now move Slider #1 to catalog the various special functions; note that there are three separate memory clearing options.
3. Key in 12 to clear all memory. The display will ask if you really want to do this. If so, press YES.
4. Key in 15 to clear all sound memory (this erases all samples in the SP-1200). The display will ask if you really want to do this. If so, press YES.
5. Key in 16 to clear all sequence memory. This keeps the samples intact but erases the various segment and song patterns. The display will ask if you really want to do this. If so, press YES.
6. De-active the SET-UP module...and start filling up the memory again.

2O CHECK REMAINING MEMORY (SET-UP SPECIAL FUNCTION 13)

Whenever the SP-1200 is stopped, you may check the remaining amount of memory by activating the SET-UP module, keying in 23 for the special function menu, and keying in 13 to select the memory remaining function. The display will show the amount of sequence memory available (expressed as a percentage) and the amount of sound (sampling) memory in seconds.

If you find yourself running out of memory often, make sure you read Section 3M (Efficient Use of Memory).

Part 3: CREATING A SONG

- 3A Creating a Song: Overview**
- 3B Selecting a Song**
- 3C Chaining Segments Together**
- 3D Ending a Song**
- 3E Editing Songs**
- 3F Using Repeats**
- 3G Changing the Song Drum Sound Mix**
- 3H Setting Song Tempo**
- 3I Programming Tempo Changes Within a Song**
- 3J Jumping to a Sub-Song**
- 3K Programming Trigger Outputs**
- 3L Starting at a Specified Point in the Song**
- 3M Efficient Use of Memory**

CREATING A SONG

3A CREATING A SONG: OVERVIEW

There are two ways to create songs using segments. One way is to simply run the SP-1200 and key in each segment just before you want it to appear. However, a far easier way is to go into song mode (by pressing the SONG/SEGMENT button), and programming a sequence of segments to create a song.

We suggest first writing out the order of segments on paper, and also noting any repeats, tempo changes, or mix changes. Writing the song out first makes the whole process go much more smoothly.

Selecting a song for either playback, recording, or editing consists of:

- Pressing the SONG/SEGMENT button to go into song mode (the SONG light glows).
- Selecting one of 100 different songs to work on (00 to 99).
- When you first enter song mode, the display's top line shows the current song number and song tempo.
- To play back the song, press RUN/STOP.
- To create a song, press the REC/EDIT button to enter EDIT mode (its LED will light). EDIT mode is a safety feature that prevents accidental song step erasures. After entering EDIT mode, key in the number of each segment you want chained together, in the order in which you want them to play. To save memory space, repeat commands let you repeat a segment (or group of segments) many times.

When creating a song, you are automatically in EDIT mode and have the following editing options:

- Stepping sequentially through each step (either up or down).
- Inserting an additional step at any place in the song.
- Deleting a step at any place in the song.
- Choosing a drum mix for the particular song or any section of the song.
- Choosing the tempo for the particular song, including accelerandos and ritardandos (speeding up and slowing down). This can be done instantly, or over a selected number of steps.
- Adding repeats when a segment plays over many times.
- Going to a Sub-song, and returning where you left off after the Sub-song has played through.
- Jump to another song, which can have its own mix, tempo, etc.

Note: When going to song mode from segment mode, segment level and tempo settings are not transferred over to the song. Instead, each song has its own programmed tempo (see Section 3H) and can acquire (at any time during the song) any of the eight previously defined drum sound mixes (see Section 1K).

When it comes time to end the song, you may:

- Unconditionally end it.
- Repeat the song indefinitely.
- Link the end of the song to the beginning of another song.

There are many other features of song mode, such as indefinite repeat, programmed metronome outputs, and so on. These will be described in detail in this section.

Remember: To work with a song you must be in song mode (press the SONG/SEGMENT button until the SONG light glows).

3B SELECTING A SONG

To Choose a Particular Song:

1. Press the SONG/SEGMENT button so that the SONG light glows.
2. Key in the two digit song number with the keypad. Leading zeroes must be entered for single digit song numbers (i.e. press 0 then 7 to select song 07). The display's upper line will confirm your choice.
3. To start entering segment numbers, press REC/EDIT. The lower line will indicate the contents of the first song step — either END for end (Section 3D), the number of a segment (Section 3C), a begin repeat (| -) sign (Section 3F), a Mix # (Section 3G), or tempo change command (Section 3I).

CREATING A SONG

3C CHAINING SEGMENTS TOGETHER

As mentioned in the overview, it's best to write out the order of segments you want to program into a song. Let's try a simple example:

Segment #	Section of Song
Step 1: 61	Introduction
Step 2: 62	"
Step 3: 61	"
Step 4: 63	"
Step 5: 64	First verse
Step 6: 64	"
Step 7: 64	"
Step 8: 65	"
Step 9: End	End

Here is how you would write a song using these segments:

1. Make sure you are in song mode (SONG light glows).
2. Select the song you want to program (Section 3B), then press REC/EDIT to enter EDIT mode.
3. Key in the first segment number (in this case, 61). The display's lower line confirms your choice for the first song step.
4. Press ENTER or Right Arrow (whichever you prefer). This enters the first segment number into step 1, and advances to step 2 (the display's lower line now says Step 2: to confirm that you have reached the second step).
5. Key in the next segment number (in this case, 62) in a manner similar to steps 3 and 4. After you press ENTER or Right Arrow, the display's lower line will show Step 3: to indicate that you're ready to program the next step. Continue keying in the various segment numbers until the entire eight segment song has been entered.
6. Proceed to the next section for information on how to end the song.

3D ENDING A SONG

After programming your song, you have several ways to end it. This assumes that you've already entered all the segments, and that you are one step past the last step in which you entered a piece of song data (for example, if you've entered eight segments, the display's lower line should now show Step 9:). Here are your options:

1. To repeat the song indefinitely (loop the song), press END (a flashing cursor will appear after End), then press REPEAT. The display's lower line will indicate that this step will continuously "loop" the song.
2. To link the end of your first song to the beginning of another song, press END (a flashing cursor will appear after End), then key in the two-digit number of the song you want to link. The display's lower line will confirm your choice by saying "Link (song number)".
3. To stop the SP-1200 completely after the song, press END (a flashing cursor will appear after End). Press END a second time; the flashing cursor will disappear, and the display's lower line will show End to confirm that the song ends at this step.

Note: Entering End at step 1 of the song (in other words, pressing END twice as described above in paragraph 3) erases the song. The display will ask "End Here? Yes/No" to check if you really want to do this. If you do, press YES.

3E EDITING SONGS (STEPPING, INSERTING, DELETING)

1. **Stepping:** To change a song step, locate the step with the Right Arrow and Left Arrow buttons. Pressing Right Arrow increases the step number, Left Arrow decreases the step number. Tap either key once to move one step at a time, or hold either key down for a "fast forward" or "fast backward" effect. When you reach the step you want to change, simply key in the new information.
2. **Inserting:** Inserting creates an additional step (or steps) in an existing song. Consider a situation where you want to insert another segment in a song right after step 4. First, press Right Arrow or Left Arrow until you reach step 5 (the step which is right after step 4). Press INSERT. Two things happen: This step becomes available for entering a song step, and all subsequent steps are automatically renumbered to reflect the addition of the inserted step (for example, what used to be step 5 now becomes step 6, step 6 becomes step 7, step 7 becomes step 8, etc.). You may now key in the instruction for the new step 5 (in this case, it would be a segment number). After entering the instruction, press ENTER to enter the instruction into the SP-1200's memory, unless you want to add more steps. In that case, press INSERT again to add another insert, and continue as described above.
3. **Deleting:** Move to the step you want to delete (let's choose step 8 as an example) by using the Right Arrow and Left Arrow keys. When step 8 appears in the left-hand readout, press DELETE. The current step 8 is deleted, and all subsequent steps are automatically renumbered to reflect the deletion of this step (step 9 becomes the new

CREATING A SONG

step 8, what used to be step 10 becomes step 9, and so on). To delete more steps, continue pressing DELETE.

3F USING REPEATS

You may enclose a segment, or group of segments, inside repeat instructions to repeat the segment(s) a selected number of times. This not only simplifies song programming, but also saves memory compared to entering multiple segments. As you write out the order of steps for a song, take these repeat instruction steps into account; consider the following song as an example:

Song Step #	Segment to Be Played	Song Step #	Segment to Be Played
Step 1:	61	Step 17:	65
Step 2:	61	Step 18:	66
Step 3:	61	Step 19:	67
Step 4:	61	Step 20:	68
Step 5:	62	Step 21:	65
Step 6:	63	Step 22:	66
Step 7:	67	Step 23:	67
Step 8:	68	Step 24:	68
Step 9:	65	Step 25:	65
Step 10:	66	Step 26:	66
Step 11:	67	Step 27:	67
Step 12:	68	Step 28:	68
Step 13:	65	Step 29:	End
Step 14:	66		
Step 15:	67		
Step 16:	68		

We can simplify this by using the repeat function:

Song Step #	Segment to be Played or Instruction
Step 1:	Begin repeat
Step 2:	61
Step 3:	End repeat 4 (- 4)
Step 4:	62
Step 5:	63
Step 6:	67
Step 7:	68
Step 8:	Begin repeat
Step 9:	65
Step 10:	66
Step 11:	67
Step 12:	68
Step 13:	End repeat 5 (- 5)
Step 14:	End

Here's how you would use repeat instructions to advantage in this example:

1. At step 1, press REPEAT. The right-hand display shows the | - begin repeat sign. Press ENTER to enter this step into the SP-1200's memory. Note that the SP-1200, being such an intelligent fellow, will automatically insert the right kind of repeat mark — if there is no begin repeat instruction in the song, it will insert a begin repeat command when you press REPEAT; if a begin repeat already exists, then the SP-1200 will give you an end repeat command when you press REPEAT.
2. At step 2, key in the segment number, then press ENTER to enter this step into the SP-1200's memory.
3. At step 3, press REPEAT; the display's lower line will show the | - end repeat sign and the default setting of 02 repeats, with a flashing cursor under the first digit.
4. Specify the number of times you want the repeat to occur. This can be done with the keypad, or you can increment the default setting with the Right Arrow key or decrement the default setting with the Left Arrow key. In this example, you would key in 04. Leading zeroes must be entered for single-digit repeat numbers. Finally, press ENTER to enter the number of repeats into the SP-1200's memory.

CREATING A SONG

5. Enter segments 62, 63, 67, and 68 as described in Section 3C.
6. When you reach step 8, press REPEAT. The display's lower line will show a begin repeat symbol.
7. Enter segments 65, 66, 67, and 68.
8. When you reach step 13, press REPEAT to end the repeat, then press 05 to indicate that you want segments 65, 66, 67, and 68 repeated five times. Finally, press ENTER to enter this step into the SP-1200's memory.
9. At step 14, press END twice to unconditionally end the song.
10. Now start the SP-1200. It will play back the song, with the lower display line showing each segment as it occurs.
11. Editing: To insert a repeat after entering a series of segments, first stop the SP-1200, then use the INSERT command to create a new step. You may then enter a repeat instruction in this new step.

Note: It is possible to create "illegal" repeat commands when using the INSERT and DELETE buttons, such as having one repeat inside another repeat. The SP-1200 will not follow these illegal commands, but rather, will look for the last begin repeat command and execute this loop, ignoring any other loops.

3G CHANGING THE SONG DRUM SOUND MIX

A song initially has a default drum sound mix where all drums are at the same level. However, you may insert a "change mix" command as one of the song steps (usually, the first song step will specify the desired initial mix). Segments which play after the change mix command will reflect the new mix. You may select from any of the eight drum sound mixes (as defined in Section 1K), and have an unlimited number of mix changes during the course of a song.

To change a mix, follow these steps:

1. At the song step immediately prior to where you want the mix to change, press MIX CHANGE. If you have already programmed a song and want to add a mix change, insert a song step and then press MIX CHANGE. The display's lower line will show the song step number and Mix #, with a flashing cursor after the #.
2. Use the keypad to key in the number representing the desired drum mix (see Section 1L); leading zeroes are not entered in this case. The display will confirm your choice of mixes.
3. Press ENTER, Right Arrow, or Left Arrow to enter the change mix command into the SP-1200's memory.

SAMPLING YOUR OWN SOUNDS

3H SETTING SONG TEMPO

Each song can have its own programmed tempo from 40 to 240 Beats Per Minute.

1. To change tempo (the SP-1200 may be stopped or running and in or out of EDIT mode), press TEMPO. (Note: If you change tempo while the SP-1200 is running, the tempo setting is not stored and does not loop around if a song should repeat. For best results, change tempo while the SP-1200 is stopped.) The cursor will flash under the first digit of the tempo. There are five ways to enter tempo:
 - Press the Right Arrow button once to increase the tempo by 1 BPM. Hold the button down to increment through the tempo 1 BPM at a time.
 - Press the Left Arrow button once to decrease the tempo by 1 BPM. Hold the button down to decrement through the tempo 1 BPM at a time.
 - Use the Keypad to enter the tempo directly, accurate to 1/10th BPM four digits). Leading zeroes must be entered.
 - Vary Slider #1
 - “Tap” the tempo you want on the TAP/REPEAT button. The SP-1200 will compute the time between taps and translate that to Beats Per Minute. If desired, you can tap continuously and when the groove feels just right, stop tapping; the last time between taps will be remembered as the tempo. The rear panel TAP/AUTO REP jack accepts a momentary-action, normally open footswitch if you want to tap with your foot instead of your hand.
2. When the display shows the desired tempo press ENTER.

3I PROGRAMMING TEMPO CHANGES WITHIN A SONG

The tempo change feature is very handy if you want to program the tempo to speed up or slow down at specific places in the song. You may introduce tempo changes at any point in a song; as you write out the song steps, allot a step for each tempo change instruction.

1. Make sure you are in song mode.
2. At the song step immediately prior to where you want the tempo to change, press TEMPO CHANGE. If you have already programmed a song and want to add a tempo change, insert a song step and then press TEMPO CHANGE. The display will ask you to specify Accelerando (key in 1) or Ritardando (key in 2).
3. After selecting Accelerando or Ritardando, the display's lower line will show the song step number, a quarter note symbol, and +00/00 (for Accelerando) or -00/00 (for Ritardando). A cursor will be flashing under the first 0.
4. The first pair of digits signifies the tempo increase or decrease in BPM (up to 99, within the constraints of the 40 to 240 BPM range); the second pair of digits signifies the number of beats over which this change is to occur (up to 32 beats). Use the keypad to key in the desired BPM change, then press ENTER. Next, key in the de

Part 4: SAMPLING YOUR OWN SOUNDS

- 4A Sampling: An Overview**
- 4B Setting Levels Prior to Sampling**
- 4C Assigning Sound Location and Output Channel**
- 4D Setting the Sampling Threshold**
- 4E Setting the Sample Length**
- 4F Initiating and Stopping Sampling**
- 4G Deleting (Erasing) a Sound**
- 4H Modifying Via Truncation and Looping**

SAMPLING YOUR OWN SOUNDS

4A SAMPLING: AN OVERVIEW

The SP-1200's sampling capabilities are pretty staggering. The SP-1200 can hold 32 user sampled sounds. These samples can come from acoustic drums, electronic drums, synthesizers, or even records, CDs, and tapes.

There is a catch; with the SP-1200 (ten seconds of sampling time), the average length of each sound can only be about 320 milliseconds long (10 seconds divided by 32 sounds). On the other hand, since most percussion sounds are fairly short, (many shorter than 320 milliseconds) 10 seconds can be a lot of drum time.

This chapter of the manual gives the basics of sampling, while the Appendix gives additional tips and techniques to help you create top-quality samples.

Sampling always begins by activating the Sample module.

4B SETTING LEVELS PRIOR TO SAMPLING (SAMPLE 1 & 3)

There are two Sample module functions involved in level setting: VU Mode (SAMPLE 1) and Level (SAMPLE 3). The module's GAIN control trims the record level, just like the record level control on a tape recorder.

1. Plug the output of the sound being sampled (microphone, synth drum output, etc.) into the rear panel SAMPLE IN jack.
2. Activate the SAMPLE module; this automatically puts the SP-1200 in VU mode (SAMPLE 1). (If you select another SAMPLE function at some point, entering the data for that function usually returns you automatically to VU mode.)

The left of the display's top line will show the sound location where the sample will be recorded; this defaults to the lowest available empty sound location.

The right of the display's top line will show the preamp gain setting, which defaults to the last selected value (for a new SP-1200, this is +00 dB). +00 dB is good for line level signals, +20 dB works for most electrified instruments, and +40 is suitable for mic level signals. For the highest-quality recording, we recommend using the +00 dB setting exclusively. If additional gain is required, use a low noise outboard preamp.

The display's bottom line is a moving-bar VU meter with "peak hold", which briefly "holds" the highest level attained. The VU meter may or may not be showing any activity.

3. Play the sound to be sampled. Note the moving bar display in the lower line; louder signals will kick the bars further over to the right. If the meter hardly moves at all, turn up the GAIN control. If you cannot achieve sufficient gain to get a good signal level, proceed to the next step.

If the meter bar hits the extreme right hand side, the SP-1200 is being overloaded. Turn down the GAIN control so that the peaks are below this overload point. Generally, you will want to sample at the highest possible level short of overload.

SAMPLING YOUR OWN SOUNDS

4. To select between the available preamp gains of +00 dB, +20 dB, and +40 dB, with the module active key in 3. Use the Right Arrow and Left Arrow buttons to step through the three gain options. After making your selection, press ENTER to return to VU mode. Check that the sound to be sampled is now providing sufficient level to the SP-1200.

4C ASSIGNING THE SAMPLE TO A PARTICULAR PLAY BUTTON AND OUTPUT CHANNEL (SAMPLE 2)

The SP-1200 default assignment places the sampled sound on the lowest available empty play button number, with the sound appearing on output channel 7 or 8. Both of these can be changed as follows:

1. With the SAMPLE module active, key in 2. The display's top line will give the current button number, with a cursor appearing underneath the number. Key in the desired Sound number with the keypad (leading zeroes are not entered); when the display confirms your choice, press ENTER.

If an asterisk appears next to the Sound location, it already contains a sampled sound. If you press ENTER, as a safety measure you will be asked if you want to erase the existing sampled sound.

2. The bottom line will now show the output channel assignment for the selected Sound. A cursor will appear under the output channel number. Key in the desired output channel number with the keypad (leading zeroes are not entered); when the display confirms your choice, press ENTER. The output channel number is stored with the sound number until changed.

4D SETTING THE SAMPLING THRESHOLD (SAMPLE 4)

There are two ways to initiate sampling: Threshold-sensitive sampling and forced sampling (SAMPLE 9). With threshold-sensitive sampling, once sampling is "armed" sampling begins whenever the signal to be sampled exceeds the programmable threshold level. To set the threshold level:

1. With the SAMPLE module active, key in 4. The display shows the regular bar graph display on the bottom line, and a single bar on the top line which represents the threshold. If the threshold has not been adjusted since the memory was last cleared, the threshold defaults to minimum and the display advises you to "Use Slider #1"; otherwise, upon selecting SAMPLE 4, the threshold sits at wherever it had been set previously.
2. To change the threshold level, vary Slider #1. Generally, you will set threshold just above the residual noise of the sound to be sampled (the display's lower line will show this noise, if any, as erratically moving bars towards the left of the line). Therefore, the noise will not initiate sampling, but a signal that exceeds the threshold will.

SAMPLING YOUR OWN SOUNDS

Hint: Set the lowest possible threshold. If the beginning of a sound is cut off, the threshold is too high. If there's a delay before the beginning of a sound, the threshold is too low and the sample was probably triggered by some noise prior to the actual signal.

Note: Once sampling has begun, the SP-1200 will continue sampling even if the signal falls below the threshold level.

4E SETTING THE SAMPLE LENGTH (SAMPLE 5)

Once sampling starts, the SP-1200 will normally sample until it runs out of memory or is stopped (Section 4F). However, this function lets you program a fixed sample time up to 2.5 seconds; after this time has elapsed, the SP-1200 will stop sampling.

1. With the SAMPLE module active, key in 5. The display's top line indicates the amount of time available for sampling. The maximum settable sample length is 2.5 seconds. Therefore, even if you have more than 2.5 seconds available, the display will indicate 2.5 seconds. Once you have less than 2.5 seconds of sampling time left, the display will indicate the maximum amount of time available for sampling.
2. Vary Slider #1 to change the sample length in 100 millisecond(0.1 second) increments. When the display confirms your choice, press ENTER. The sample length will remain as set until changed, or until you select a different sound location.

Note: The SP-1200 is partitioned into four 2.5 second zones. Sounds cannot "cross over" from one zone to the other. For example, if you record a 2.0 second sound, then another three 2.0 second sounds, there will 0.5 seconds remaining in each zone. You cannot record a 1.0 second sound at this point, although you would be able to record four 0.5 second sounds.

To check the remaining memory available for sampling, query the sample length as described above.

4F INITIATING AND STOPPING SAMPLING (SAMPLE 7 & 9)

You've set the level, the threshold, the sample length, and assigned the sound to be sampled to the right sound location and output channel; now it's time to sample. The SAMPLE module must be active.

1. To initiate threshold-sensitive sampling, key in 7. The display's top line says "Sample Armed", while the bottom line shows the moving-bar VU meter. As soon as the level of the signal to be sampled exceeds the threshold, sampling will begin. Sampling will stop at the end of the programmed sample length or if the SP-1200 runs out of memory.

SAMPLING YOUR OWN SOUNDS

2. Forced sampling is useful for situations where the signal to be sampled is more or less continuous (continuous signals greatly complicate the threshold-setting process described earlier). To initiate forced sampling, key in 9. The display's top line says, "Sampling", while the bottom line shows the moving-bar VU meter. Sampling will stop at the end of the programmed sample length or if the SP-1200 runs out of memory.
3. After sampling is complete, the SP-1200 will check the sample and one of two messages will appear in the display's top line. "Sample Overload" indicates that the sound being sampled exceeded the SP-1200's headroom (however, this sound is nonetheless available for use if desired). "Sample is good" indicates that no overload occurred.
4. If you are not satisfied with the sample, try again by keying in 6 to re-sample the sound.

4G DELETING (ERASING) A SOUND (SET-UP 20)

Recording over a sound will erase the previous sound contents. However, you might also want to erase a sound without recording over it in order to create more memory space.

To Erase a Sound:

1. Activate the SET-UP module and key in 20. The display will ask you which Sound you want to delete.
2. Key in the Sound to be deleted with the keypad. The display will ask you to confirm your choice by pressing YES (if you press NO, you will remain in the module, whereupon you can re-select the Delete function or any other SET-UP module function).
3. After pressing YES, the sample will be deleted.

Note: If you have copied a sound over to another bank, deleting the original sound will not erase the copied sound. The copied sound must itself be specifically erased. Here's an example to help get the point across:

Suppose you record a tambourine in sound location A7, then copy this over to bank D, cowbell sound. Erasing A7 will not erase the tambourine sound that replaced the cowbell sound in bank D. To erase the bank D sound, in step 2 above press the cowbell play button. The tambourine sound which had been copied over will be erased.

SAMPLING YOUR OWN SOUNDS

4H MODIFYING A SAMPLE VIA TRUNCATION AND LOOPING (SET-UP 19)

Truncation shortens a sound's length by trimming off parts of the beginning and/or end. This allows you to cut off unneeded portions of a sound to save memory, change instrument characteristics (i.e. remove the attack from a plucked string note), cut off a long decay (which is great for simulating noise-gated reverb effects on drums), or isolate a particular section of a sample.

As mentioned in the introduction, the SP-1200's memory capacity is 10 seconds. Since each second requires 26,000 samples, this works out to a total available memory space of 260,000 samples. All truncation and looping times are referenced to samples, not seconds. Example: If you truncate the beginning (start) of a sound by 2,600 samples, you have cut 1/10th of a second from the start of the sound (26,000 samples = 1 second, so 2,600 samples = 1/10th of a second).

To Truncate a Sound:

1. It is good practice to set Sliders #1 and #2 all the way down, and Sliders #3 and #4 all the way up, before beginning the truncation process.
2. Activate the SET-UP module and key in 19. The display's top line will show the name of the sound to be truncated. If this is the desired sound, press ENTER. If not, key in the desired sound using the black play buttons and then press ENTER.

Note: If there are any copies of the selected sound in the SP-1200, the display will read "Copied" and will not let you truncate or loop the sound until all copies are deleted. This occurs because copied sounds are using the same sample data as the original. Truncating the sound would truncate all the copies.

3. The display's top line will now show the Start point (which defaults to 00000) and the sound being truncated. The display's bottom line will show the End point of the sample (which defaults to the sample length) and Loop Length (which defaults to NONE). Example: If the End display shows 26,000, then the sample is exactly one second long.
4. Slider #1 gives coarse control over the amount of start truncation, while Slider #2 gives fine control. Moving the sliders upwards increases the amount of truncation. Example: Adjusting these sliders so that the bottom line indicates S=2600 means that you have cut 1/10th of a second from the beginning of the sample.

Note that you cannot truncate a sound one sample at a time, but rather, in groups of samples (even with the fine truncation slider).

5. Slider #3 gives coarse control over end truncation, while Slider #4 gives fine control. Moving the sliders downwards increases the amount of truncation. Example: With a 26000 sample length sound, setting these sliders so that E=13000 means that the end point now occurs halfway through the sample (26000 divided by 2 = 13000).

SAMPLING YOUR OWN SOUNDS

As with start truncation, samples are truncated in groups rather than one at a time, even with the fine truncation slider. As you change truncation, press the appropriate Play button to hear the results.

6. Looping can be set at the same time as truncation, or you can loop a previously truncated sample. Looping marks off a section (called a loop) of a sound. The display indicates the Loop Length (L=), whose end point is the end of the sample. With a looped sound, the sound plays normally until it reaches the end of the loop. It then jumps back to the Loop start point and re-plays through the loop. Upon reaching the loop end, it again re-plays the loop. Fig. 4-1 indicates a typical looping action. Looping provides "infinite sustain" effects, extends short samples, and if the loop is rhythmically related to a composition, produces interesting rhythmic effects.

You might wonder how useful an infinitely sustaining sound is, especially since this is supposed to be a percussive device...well, don't forget about SETUP 18, which lets you alter a sound's decay time instead of its tuning. Short decays work great with looped sounds if you want percussive effects.

7. If the display is already showing the truncation/loop parameters, proceed to step 7. Otherwise, activate the SET-UP module and key in 19. The display's top line will show the sound to be truncated/looped. If this is the desired sound, press ENTER. If not, key in the desired sound with the black play buttons and then press ENTER.
8. Slider #5 gives coarse control over the loop length, while Slider #6 gives fine control. Moving the sliders upwards increases the loop length. Example: Adjusting these sliders so that L=2600 means that the loop length is 1/10th of a second long.

Note that you cannot alter loop length a sample at a time, but rather, in groups of samples (even with the fine loop length slider).

9. If you decide to change the truncation, note that you cannot truncate the sound shorter than the loop length; you must decrease the loop length in order to truncate any further. Also, you cannot set a loop length longer than the total sample time (fair enough).
10. When truncation and looping are set as desired, press ENTER. The display now asks "Make Truncation Permanent? Y/N." Press YES to discard the truncated portions of the sound; this frees up additional sampling memory. Press NO to retain the current truncation settings, but hold the full sound in memory. This is useful if you think you might need to return to the original sound.

Note: Activating SET-UP and selecting SPECIAL FUNCTION 19 sets a default decay for all sounds (as set by Slider 1). This is useful if you loop a sound and want it to decay, but also want to produce different pitched sounds.

Part 5: SAVING YOUR DATA

5A Background: Saving Data

5B Handling of Disks

5C Formatting Disks

5D Disk Operations

SAVING YOUR DATA

5A BACKGROUND: SAVING DATA

Since you spend a lot of time working on segments, songs, and sampled sounds, you should spend the small amount of time necessary to save them. Don't just save when you've filled up the memory; save periodically in case something goes wrong (yes, integrated circuits are subject to Murphy's Law).

5B GENERAL CARE AND HANDLING OF DISKS

Disks represent the sum total of your experience with the SP-1200, and should be handled with care.

Disks should never be:

- Bent or sat on
- Exposed to strong magnetic fields (TVs, speakers, etc.)
- Subjected to temperature extremes
- Left out in the sun
- Touched on any of their magnetic surfaces
- Used for coasters or frisbees.

Disks should always be:

- Stored vertically
- Kept away from dust, dirt, and smoke
- Treated carefully and gently.

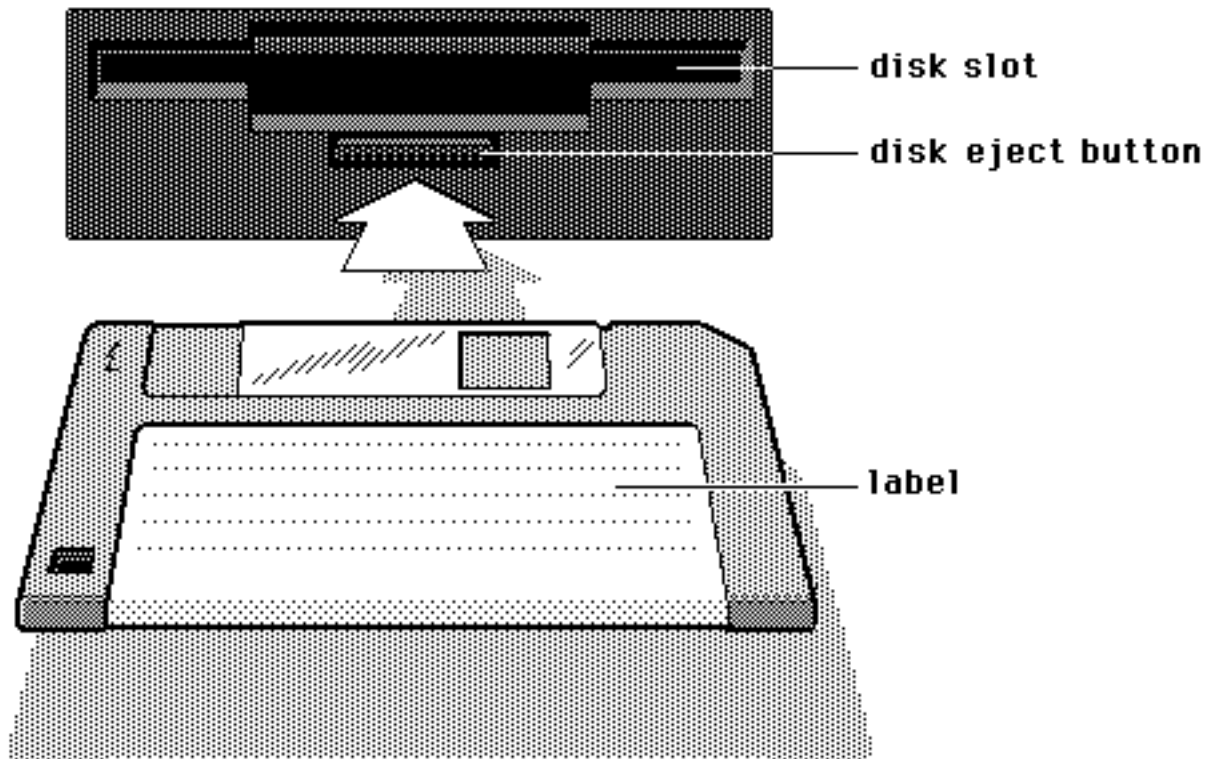
The SP-1200 requires double-sided, double-density, 3.5" microfloppy disks.

Disk drives are somewhat fragile. Before transporting the SP-1200 (even if it's only across the room), always insert and latch either the original packing material or a "scrap" disk into the drive. This protects the drive from vibration. Do not use a good disk, as it could become damaged during transit.

When active, the Drive's red LED will light. Do not try to operate any controls when the LED is on (why tempt fate?). The mechanism will occasionally make whirring sounds; these are normal.

Inserting the disk in the drive

Referring to the diagram below, insert the disk into the drive label-side up, with the metal disk protector flap going in first. Gently push the disk in as far as it will go, until you hear a solid click that indicates the disk is seated in the drive.



Labelling

Labelling your disks will save frustration; keep a log of where data is saved. Write on an adhesive label which you then attach to the disk. Writing on the disk can damage it; but if you're the gambling type, at least use a felt-tip pen and apply very little pressure.

Write-protecting disks

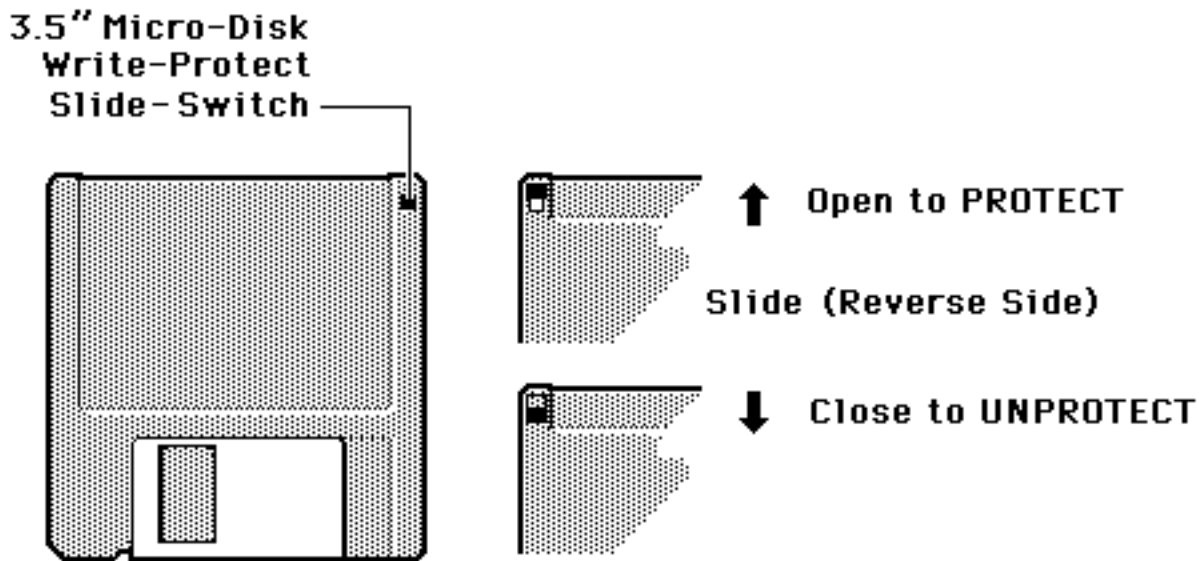
Write-protecting a disk turns off the disk drive's ability to record on to the disk, thus preventing accidental erasure.

To write-protect a disk, open the write-protect "switch" in the corner of the disk.

To write-enable the disk, close the "switch" so that there is no visible hole in the disk case.

If you try to write on a disk and cannot, check whether it is write-protected before proceeding.

MIDI, SYNC & SMPTE



5C FORMATTING DISKS AND COPYING SOFTWARE (DISK 9)

Before a new disk can record (store) any data, it first must be told how to record this data (called formatting the disk). Run the following formatting procedure on any new disk, or on "re-cycled" disks previously used with other systems (such as home computers) since these will not be formatted correctly for the SP-1200.

Note: Formatting a disk that already contains data will "bulk erase" any data on the disk being formatted and replace it with the sounds, sequences and software currently in RAM. Always check that disks are either blank, or contain nothing you want to save, before formatting. A disk need only be formatted once unless you want to use the "bulk erase" aspect of formatting.

We recommend using 3.5" double-sided, double-density microfloppy disks. Avoid bargain disks; stick to name brands. Buying in quantity can save you lots of money, so get together with other SP-1200 or personal computer owners and do group disk purchases for substantial discounts.

Copying software involves "updating" the computer program that makes the SP-1200 work. From time to time we will make improvements such as adding a new feature or correcting a problem that has been discovered. Because the program or software resides on the disks, updating the SP-1200 is simply a matter of loading in a new disk and copying the software to all your other disks!

To Format a Disk:

1. Activate the Disk module.
2. Key in 9 for Format/Copy Software. The display will say: Format Disk: Are You Sure Y/N.
3. Press YES. The display now says: Formatting... Formatting takes a little over a minute. When complete, the display asks if you would like to format another disk.
4. Press Enter to return to the Disk menu.

To Copy Software:

1. Turn the SP-1200 off, wait a few seconds the turn it back on.
2. Insert the new software diskette into the drive when the display says, "Insert Diskette".
3. When the disk has finished loading, activate the Disk module.
4. Key in 9 for Format/Copy Software. The display will say: Format Disk: Are You Sure Y/N.
5. Press NO. The display now says: Copy Software: Are You Sure Y/N.
6. Remove the diskette from the drive and replace it with the disk you wish to update with the new software. Then press YES. The display asks you if you would like to update another disk.
7. Press ENTER to return to the Disk menu.

5D DISK OPERATIONS (DISK 0 THROUGH 8)

Here is a description of each operation, along with which buttons should be pressed. Operations which involve saving to disk (and have the potential to erase your work) give you the opportunity to change your mind by asking you for a Yes or No response. All the other functions act immediately upon pressing the number button.

- 0 **Load Sequences and Sounds:** Loads everything from disk.
- 1 **Save Sequences:** Saves all songs, segments, mixes, and channel assignments currently in memory.
- 2 **Save Sounds:** Saves all sampled sounds currently in memory.
- 3 **Load Sequences:** Loads all songs, segments, mixes, and channel assignments from disk.
- 4 **Load Segment #:** Loads the selected segment from disk.
- 5 **Load Sounds:** Loads all sampled sounds from disk.

SAVING YOUR DATA

- 6 **Load Sound #:** Loads the selected sound from disk.
- 7 **Catalog Sequences:** Shows the segments on the disk by number. If you have more segments or sounds than can fit on the display, vary Slider #1 to scroll through the entire list.
- 8 **Catalog Sounds:** Shows the sounds on the disk by abbreviated name. If you have more segments or sounds than can fit on the display, vary Slider #1 to scroll through the entire list.

Part 6: MIDI, SYNC & SMPTE

- 6A MIDI Channel and Mode Select**
- 6B Background Synchronization**
- 6C Internal Sync**
- 6D MIDI Sync**
- 6E SMPTE Sync**
- 6F Click Sync**
- 6G Writing SMPTE Time Code on Tape**
- 6H Writing a 24 Pulses-Per-Quarter Note Click Sync Track on Tape**

MIDI, SYNC & SMPTE

The SP-1200 includes several MIDI functions and synchronization options. We will describe MIDI options first, then move into synchronization. The non-sync oriented MIDI functions include select MIDI channel and play drums from MIDI keyboard.

MIDI is a way of exchanging musical information between various electronic music instruments. If you are not familiar with MIDI basics, refer to Appendix D.

6A MIDI CHANNEL AND MODE SELECT (SET-UP 22)

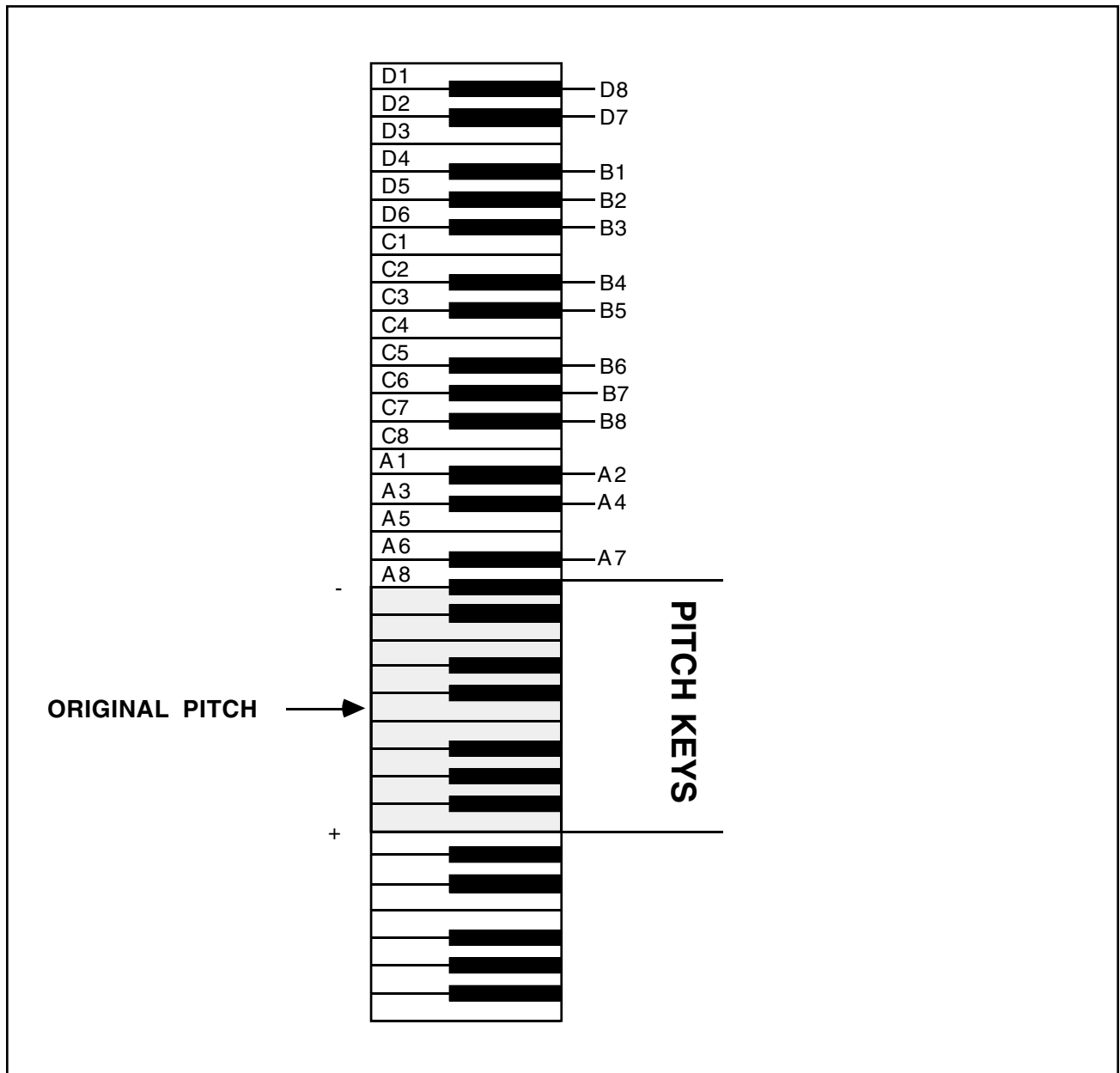
1. Activate the SET-UP module and key in 22, MIDI PARAMETERS.
2. Specify the Channel Number from 01 to 16 with the Left Arrow and Right Arrow keys or key in the number via the keypad. This specifies the channel over which the SP-1200 will receive and send data when in Poly mode. After selecting the desired Channel Number, press ENTER.
3. You may now select the MIDI mode. Key in 1 for Omni (the SP-1200 will play note information coming in on any MIDI channel) or 2 for Poly mode (the SP-1200 will play only note information coming in over the basic channel specified in step 2).

The SP-1200 sounds may now be played from a MIDI keyboard. If the SP-1200 is in Omni mode, it will respond to notes played on the keyboard regardless of the MIDI keyboard's transmitting channel. If the SP-1200 is in Poly mode, it will respond to notes only if the keyboard and SP-1200 are tuned to the same MIDI channel. If the MIDI keyboard provides velocity (dynamics) information, the SP-1200 sounds will respond to this data.

Having the SP-1200 respond to keyboard notes is handy if you want to treat the SP-1200 solely as a sound generating device and run it from the note information contained in an existing sequencer. For example, suppose you have an Emax and Drumulator with the MIDI retrofit, and have created a number of sequences on the Emax that send notes through MIDI to the Drumulator. When you add an SP-1200 to your setup, you might want to continue to run the SP-1200 from the same sequences used with the Drumulator instead of re-programming the sequences into the SP-1200. No problem; just send the sequencer's MIDI note data to the SP-1200. If the SP-1200 drum sounds triggered by the sequence are not exactly the ones you desire, just swap sounds until the right drums correspond to the right notes.

The following table shows which Emax keyboard notes trigger which SP-1200 drum sounds (of course, other MIDI keyboards may also be used).

EMAX KEYBOARD TO SP-1200 PLAY BUTTONS



After selecting the desired mode, press ENTER.

4. The display now asks whether or not you want the "pitch keys" option. If you press YES and play and hold a key for a specific sound (see above), then keys G#3 through B4 will play the different available pitches for that sound. If you don't want pitch keys, press NO. After selecting the desired option, press ENTER.

MIDI, SYNC & SMPTE

6B BACKGROUND: SYNCHRONIZATION

The SP-1200 can synchronize to one of several different tempo references: Internal clock, external click track, MIDI timing messages, or SMPTE time code. It can also generate (write) a click track or SMPTE time code signal on tape. Once recorded, these signals can feed the SP-1200 during overdubs to maintain synchronization with the original tempo.

The SP-1200 can also serve as a master timing reference (MIDI, Click, or SMPTE) to which other instruments may synchronize. The different sync protocols are selected when the SYNC module is activated.

6C INTERNAL SYNC (SYNC 1)

1. To select internal sync, activate the SYNC module and key in 1. In this mode, the SP-1200 serves as the system master timing reference, at a rate set by the Tempo function (see Sections 1O and 3H). A continuous click signal is always present at the SMPTE OUT jack; it is used mainly for recording a click track on tape (Section 6H). To send a click output from the SP-1200 while it is in segment mode to another device, program the metronome for a click output (see Section 1P). This click output signal appears at the MET OUT jack, and starts and stops as a segment is started and stopped using RUN/STOP.
2. To send a click output from the SP-1200 while it is in song mode, program the Click output as described in Section 3K. Note that MIDI timing signals are generated at the MIDI out jack in song or segment mode, so the SP-1200 can serve as a MIDI system master and generate a Click output when internal sync is selected.

6D MIDI SYNC (SYNC 2)

1. The SP-1200 always sends MIDI clock information when running from internal clock, click track clock, or SMPTE clock in either song or segment mode. When slaved to SMPTE, the SP-1200 also sends a MIDI Song Position Pointer which allows other devices to run in sync with the SMPTE track.
2. The SP-1200 can also slave to MIDI timing information coming in the MIDI IN jack. It is not necessary to press RUN/STOP when running from MIDI, as MIDI systems should include start and stop commands as part of the MIDI data stream. When slaved to a MIDI device, the MIDI THRU jack echoes whatever is coming in the MIDI IN jack. If the master MIDI device sends MIDI Song Position Pointer information and is started in the middle of a song, the SP-1200 will silently fast forward to synchronize with the master clock.

Note: If for some reason the MIDI device does not send start/stop commands but does provide timing information, you can set the SP-1200 to “ready” mode prior to receiving the MIDI signal. Select the desired SP-1200 segment or sequence and press RUN/STOP. The sync light will flash, indicating that the SP-1200 is awaiting sync. As soon as the MIDI master is started and sends out MIDI tempo information to the SP-1200, the sync light will go out and the segment or sequence will start playing.

6E SMPTE SYNC (SYNC 3)

1. To select SMPTE sync, activate the SYNC module and key in 3. In this mode, the SP-1200 can slave to SMPTE time code information coming in the SYNC/SMPTE IN jack. Tempo is set by the SP-1200's Tempo function (Sections 1O and 3H).
2. Selecting SMPTE automatically calls up the SMPTE frames per-second rate display. Use the Left Arrow and Right Arrow buttons to choose the desired the SMPTE rate. You have the following choices:
 - 24 = The standard frame rate for film.
 - 25 = The standard frame rate for European television and video.
 - 30 = The standard frame rate for American television and video (this is the default).
 - 30df = The standard NTSC color videotape frame rate.

When the display shows the desired SMPTE frame rate, press ENTER.

3. Enter the SMPTE time code point where you want the segment or sequence to begin. The SMPTE time code format is HH:MM:SS:FF, where H = hours, M = minutes, S = seconds, and F = frames (one frame is equivalent to 1/30th of a second at the 30 frames-per-second rate). When the display shows the SMPTE start point, press ENTER.
4. To sync to SMPTE, select the desired SP-1200 segment or song and press RUN/STOP. The sync light will flash, indicating that the SP-1200 is awaiting SMPTE (the display will confirm this). As soon as SMPTE time code enters the SP-1200 via the SYNC/SMPTE IN jack, the display will show the current SMPTE time code reading.

If the SMPTE time code being read from tape is earlier than the SP-1200's SMPTE start point, the SYNC light will blink until the tape catches up. When the SMPTE time code reading matches the start point, the SYNC light will go out and the segment or song will begin playing.

If the SMPTE time code being read from tape is later than the SP-1200's start point, the SP-1200 will "fast-forward" through the song or segment to catch up with the tape. The point at which playback begins depends on the start point and tempo. When the SP-1200 catches up with the tape, it sends a MIDI Song Position Pointer and a Continue message from its MIDI OUT and also begins sending MIDI clocks. This enables slave devices such as other drum machines and sequencers to start in sync with the song.

If the SMPTE time code being read from tape is much later than the SP-1200's start point, the SP-1200 may need to "fast-forward" several times through the song or segment before it catches up with the tape.

Note: SMPTE start points are stored along with the song information. Therefore, if there are no songs recorded, you will not be able to enter a SMPTE start point. The advantage of this system is that you can store a different SMPTE start point for each song!

MIDI, SYNC & SMPTE

6F CLICK SYNC (SYNC 4)

1. To select Click sync, activate the SYNC module and key in 4. In this mode, the SP-1200 syncs to click pulses arriving at the SYNC/SMPTE IN jack.
2. Selecting Click automatically selects the Click Divisor display. The SP-1200 is designed to run at its programmed tempo with a 24 pulses-per-quarter note click. However, some devices put out 48 (Linn), 96 (Oberheim), or 384 (Fairlight) pulses-per-quarter note click signals. Use the Left Arrow and Right Arrow buttons or keypad to key in a divisor between 01 and 99 to divide the incoming click signal. However, there is one complication — the SP-1200 reads both the rising and falling edge of a clock pulse. What this means is that it thinks a 24 pulses-per-quarter note signal is really 48 pulses, a 96 pulse signal is really 192, and so on. Therefore, if the SP-1200 is being driven by a 96 pulses-per-quarter note device, divide this by 08 to obtain a 24 pulses-per-quarter note signal; Fairlight fans should divide by 32). After selecting the clock divisor, press ENTER.
3. To slave to a Click signal, select the desired SP-1200 segment or sequence and press RUN/STOP. The sync light will flash, indicating that the SP-1200 is awaiting sync. As soon as the master is started and sends out Click signals to the SP-1200, the sync light will go out and the segment or sequence will start playing.

6G WRITING SMPTE TIME CODE ON TAPE (SET-UP SPECIAL FUNCTION 14)

The SP-1200 is a SMPTE time code generator that can write SMPTE time code on tape (typically one track of a multitrack recorder), to which the SP-1200 can later synchronize. Recording SMPTE on tape is called “striping” the tape.

1. Choose the desired SMPTE start point and frame rate as described in Section 6E. When you write SMPTE time code, it will start from this point and at the specified frame rate.
2. Set up the tape recorder in record ready mode, and patch the SYNC/SMPTE OUT jack to the track on which you want to write the SMPTE time code (usually an outer tape track such as 8, 16, or 24). Prepare to write SMPTE by activating the SET-UP module and keying in 23 (Special). Next, key in 14 to write SMPTE; the SP-1200 will start writing SMPTE from the specified SMPTE time point, as indicated by the display.

Use this signal to set record levels before rolling tape. A level below -3 VU seems to work well, although you will probably need to experiment to determine the optimum level (high enough to provide a strong output signal, yet low enough to not bleed over to other tracks). After setting levels, press ENTER to stop writing. Roll the tape back to where you want the SMPTE to start, go into record mode, leave a few seconds of blank tape, then press 14 to start recording the time code on tape.

Always record more time code than you think you’ll need. You can erase it later if you don’t use it, and if you ever need it you’ll be glad it’s there. In fact, many people simply stripe an entire tape with SMPTE time code as soon as they take the tape out of the box.

3. When finished, press ENTER to stop writing.

Hint: After recording SMPTE time code, play it back into the SP-1200 via the SMPTE IN jack and play a segment or song to make sure that the time code was recorded at the right level and that there are no drop-outs or other problems. The SMPTE input is optimized to respond to SMPTE signals, and does not need that much level in order to obtain sync — even -10 dBV standard gear can drive the SP-1200. If the SMPTE time code track bleeds over into other channels of the tape, try lowering the record level a bit and amplifying the signal coming from the tape output.

If the display occasionally flashes “Awaiting SMPTE” while being driven from the SMPTE track, you have either insufficient level or problems with the tape itself. Finally, SMPTE signals are rather “fragile.” Avoid putting them through boards or processors; a direct connection from recorder output to SMPTE-reading devices is preferred.

MIDI, SYNC & SMPTE

6H WRITING A 24 PULSES-PER-QUARTER NOTE CLICK SYNC TRACK ON TAPE

The SP-1200 can write a Click track to tape (typically one track of a multitrack recorder), to which the SP-1200 can later synchronize.

1. Activate the SYNC module and key in 1 for Internal sync.
2. Program the desired tempo as described in Sections 1O and 3H, and program the Metronome to generate a 24 pulses-per-quarter note click (this appears at the rear panel MET OUT jack). If you want the click track to repeat indefinitely, go into segment mode and press RUN/STOP. If you want the click track to last the length of a song, program the Metronome for a click output, add a trigger output instruction to the song (Section 3K), and play the song.

With the SP-1200 set for Internal sync, SMPTE out generates a continuous 24 pulses-per-quarter note signal. This may also be used for striping tape if you also need to have a metronome signal present, but generally using the MET OUT signal is preferred.

3. Set up the tape recorder in record ready mode, and patch the MET OUT jack to the track on which you want to write the click track (usually an outer track such as 8, 16, or 24).
4. Press RUN/STOP to generate the click signal. Use this signal to set record levels before rolling tape. Set about a -3 VU record level. After setting levels, press RUN/STOP again to stop the click. Roll the tape back to where you want the click track to start, enter record mode, leave a few seconds of blank tape, then press RUN/STOP to start recording the click track on tape. Note that any tempo changes you make while the segment is running will be reflected in the click track.

Always record more click track than you think you'll need. You can erase it later if you don't use it, and if you ever need it you'll be glad it's there.

5. When finished, press RUN/STOP to stop writing.

Hint: After recording a click track, play it back into the SP-1200 via the SYNC/SMPTE IN jack and play a segment or song to make sure that the click track was recorded at the right level and that there are no drop-outs or other problems. The SP-1200 requires a fairly hefty click in signal; with most -10 dBV standard gear, the click signal will need to be pre-amplified in order to drive the SP-1200. Most +4 dBm standard gear delivers sufficient output to drive the SP-1200. If the click track bleeds over into other channels of the tape, try lowering the record level a bit and amplifying the signal coming from the tape output.

Part 7: MIXING & PROCESSING the SP-1200

- 7A Mixing and Processing**
- 7B Pseudo Automated Mixdown**
- 7C Creating Ambience**
- 7D Using Special Effects in the Studio**

MIXING & PROCESSING THE SP-1200

7A MIXING AND PROCESSING: OVERVIEW

Sure, the SP-1200 sounds astonishingly realistic...but it doesn't necessarily sound like the drum sounds you hear on records. Why? Because when recording engineers record acoustic drums, the drums become part of a stereo acoustical space ("ambience"). Also, special effects may be added to various drums to make them punchier, brighter, fatter, and so on.

The SP-1200 can benefit from these same techniques. While you can simply plug the MIX OUT jack into a tape track or amplifier, a better approach is to plug the different drum sounds into a stereo mixing board (see Section 1M for information on how to assign different drum sounds to different output channels). This lets you place the drums in the stereo field, add special effects, and vary equalization (tone).

Don't forget that you can also mix one drum sound subtly behind another drum sound. For example, mixing the low tom sound in behind the snare at a lower volume level results in a fuller sounding snare, while mixing the open hi-hat in with the ride cymbal results in a different ride sound.

7B PSEUDO AUTOMATED MIXDOWN

Remember that you can change the song drum mix whenever desired (Section 3G). By using this feature to change drum levels as required, you can create a sort of automated mixdown effect. You won't believe how handy this is until you actually try it.

7C CREATING AMBIENCE

In most cases, you'll plug the drum outputs right into the mixing console, and pan these sounds across the stereo field. While that will give you a good, clear sound, some people may find it too clear and clinical. The solution is to add ambience — a feeling of acoustical space — to help give a more "live" sound.

You may synthesize an acoustic space using delay lines, reverb, acoustic techniques, or any combination of the three. The author recommends adding at least one channel of acoustic ambience. The easiest way to do this is to consider the signal coming from the MIX OUT jack as a sort of "ambience/reverb send" jack — after all, it contains all the drum sounds mixed in their proper proportion. Feed this output to an amplifier/speaker combination inside an acoustical space (preferably a large, "live" room with fairly hard surfaces), and turn the sound up pretty loud. You might also want to cut back on the bass as much as possible to keep the bass drum out of the ambient mix. Next, put a good quality mic in the same room. This mic should be at a distance from the speakers, and pointing away from the speakers towards one of the hard surfaces. Feed the mic output back into the board to mix some of this ambient sound in with the direct drum sound.

It's very helpful to have someone who can move the mic around as you listen to the results of these changes on headphones. You might want to mark the floor with chalk or tape if you find some particularly sweet spots for mic placement.

MIXING & PROCESSING THE SP-1200

So far, that's one channel of ambience. You could add a second channel, but another approach is to split the mono ambient signal into two feeds. One of these would be panned left, while the other would be delayed by about 15 to 80 ms and be panned right. This gives a uniform ambient sound, yet one which covers the full stereo field. Connecting more time delay effects (chorusing, flanging, pitch transposers, etc.) in parallel with the drum sounds adds very pleasing subliminal effects, assuming that you mix any of these effects in at a relatively low level.

Another popular ambience effect involves noise gating the ambient signal, and triggering this noise gate from the snare drum and toms. Thus, every time you hit the snare or a tom, the ambience cuts in; but when the snare and toms aren't happening, there's no spillover or noise from the ambient signal.

7D USING SPECIAL EFFECTS IN THE STUDIO

Here are some special effects which are very useful with electronic drums:

Reverb is a common special effect. Unfortunately, spring reverbs have some limitations, one of which is an inability to handle sharp bursts of energy — like drum beats. To minimize this problem, try limiting the drums before going into the reverb unit. A better choice is to use plate or digital reverbs.

Splashing is a technique used with reverb. If you want to reverb specific beats, advance the reverb send control just before the beat, then turn it down after the beat. That one beat will be sent to the reverb and reverberated.

Echo units, when synched as closely as possible to the tempo of the song, can add interesting synchro-sonic effects. For example, try feeding the SP-1200's snare output into an echo unit whose echo time equals a quarter or half note, and whose regeneration (feedback) is up part way. You can also add double-time effects easily by setting the echo time equal to an eighth note.

Equalization can perk up the sound of individual drums. Actually, the quality of the SP-1200 sounds is superb, so in practice little equalization is needed. However, a little extra bottom on the bass drum, some extra sheen on the high hats, and an upper midrange boost on the snare drum can do for a SP-1200 what a little tasteful make-up can do for a face.

Noise gates, in addition to enhancing ambient effects as described above, can also clip the decay of drums for a more percussive, clipped sound.

Ring modulators give great outer space and gong-like effects.

Pitch transposers can fatten up a drum sound by adding harmonics or sub-harmonics to the drum sound. They are especially effective with handclaps.

Chorus units can really enhance handclaps. Drum unit handclaps tend to sound unrealistic, since after all, no group of humans are going to clap their hands in exactly the same way every time. One way around this is to set the chorus for maximum delay (usually around 20 ms), and use modulation to vary the width. As the amount of delay changes, the handclaps tend to sound thinner or thicker.

APPENDIX

APPENDIX A: THE ART OF SAMPLING

Recording good samples is not always easy; creating a really super set of sounds requires patience, practice, and skill. Sure, you can get musically useful results within a few days after working with the SP-1200, but as you learn your craft the quality of your samples will improve dramatically.

Sampling involves two major processes:

1. Taking the best possible sample.
2. Manipulating the sample within the SP-1200 (truncating and looping).

PART 1: TAKING THE BEST POSSIBLE SAMPLE

What comes out of the SP-1200 can only be as good as what you put in: Strive for maximum fidelity when sampling. Here are some ways to increase sample quality.

GENERAL TIPS

- Live sampling: Sample “live” whenever possible, rather than recording a sound on tape then sampling from the tape.
- Beware of overloads: The SP-1200 is a digital recording device. Unlike analog recording devices, distortion does not increase slowly past a certain level; rather, it increases rapidly above the overload point, and produces a “non-musical”, splattering type of distortion. Monitor your levels carefully.
- Sampling direct vs. sampling via microphone: Whenever possible, sample electronic instruments directly into the SP-1200. Avoid using a recording console, direct box, or other device in between the instrument and SP-1200.
- Maintain the instrument to be sampled: Tune your instrument if applicable, and check that the instrument doesn’t have any loose parts that rattle, squeak, or make other noises.
- Sampling acoustic instruments: Choose the microphone and mic placement as carefully as you would for any recording project. Musicians sometimes note how hard it is to get a good “sound” in the studio, but that’s what sampling is all about...getting a good sound, and once you’ve got that sound, keeping it.

APPENDIX

- Play naturally: Sometimes it's a lot harder to play one note than several hundred. Unless you're trying for a special effect, play the sample as you would normally play the instrument. It's often a good idea to play several notes, and use truncation to zero in on the best of the bunch.
- Avoid ground loops: Ground loops occur when electricity can take two different paths to ground. If there is a resistance difference between the two paths, this can generate a signal (consisting mostly of digital "hash") that can work its way into the recording chain. With all the instruments patched in place and connected to each other, turn off the SP-1200 and insert a ground lift adapter between the SP-1200 plug and the wall. CAUTION: Removing the ground connection defeats the safety advantage of using a three-wire plug. Make sure the SP-1200 chassis has some other path to ground (usually via the audio input and output cables). Having two paths to ground can cause ground loops, but having no paths to ground can cause a potential shock hazard if there's an equipment malfunction in the studio.

WARNING: E-MU cannot be responsible for the use of ground lifters in improperly or inadequately wired environments.

- Using signal processing while recording: Just as with regular recording, there are no absolutes about recording signals with or without signal processing. Some engineers feel that tracks should always be recorded flat to allow for the maximum number of options during mixdown; others prefer to record with a bit of processing, especially if the processor might be needed on another track when mixing.

Here are some thoughts about the use of various types of signal processors when recording samples.

- External Preamp: If you need to preamplify the signal being sampled, set the Sample section GAIN SET to 00 dB and use an external, high-quality preamp to increase the signal level going into the SP-1200. The SP-1200 preamp noise level, while acceptable, is sometimes not as quiet as an external mic preamp.
- Limiting Dynamic Range: Limiting the signal being sampled can put a higher average signal level into the SP-1200, thus improving the already excellent signal-to-noise ratio. Also, the limit point can be set just under the SP-1200 overload point, which makes level setting less critical.
- Equalization: If using EQ gives a better instrument sound, then use it. You want the best possible sound going into the SP-1200, so if a little EQ is indicated, it's usually better to add it while recording rather than having to think about it during playback.
- Compression: Compression can be helpful when looping sounds since it evens out level changes, thus reducing any tendency towards loop "glitching" due to abrupt level changes between the beginning and end points of the loop. If appropriate, use the SP-1200's decay option to shorten the overall decay time and restore the original signal dynamics.

- Audio “exciters”: To brighten up a sampled signal, use a device such as an Aphex Aural Exciter or EXR Projector. Both of these devices add a high-end “sheen” without adding the stridency encountered with excessive high-frequency equalization.
- Using noise reduction: A number of single-ended noise reduction units (such as the MicMix Dynafex or Rocktron Hush) are now available; these do not require that the noisy signal have been previously encoded, as is the case with Dolby and dbx. If your source signal is noisy, one of these devices can help to greatly clean up the overall sound quality as you sample.

Maintaining sample quality when sampling from tape recordings:

Follow common-sense recording practice — be extremely careful about mic placement, use noise reduction when recording samples on to tape, limit the signal going on to tape rather than limiting the signal coming off the tape into the SP-1200, and add aural enhancement if desired.

Sampling from Compact Discs: This is a great way to get high quality drum sounds, especially with so many records having solo drum intros and breaks.

Creative use of multi-tracking: Try multi-tracking sounds on a conventional recorder, then sampling the combination sound into the SP-1200. For example, combining electronic and acoustic percussion sounds can produce some very useful results.

PART 2: MANIPULATING THE SAMPLE

Proper use of truncation and looping can conserve memory and create novel effects; let’s show how it’s done with an example. Suppose you want to sample a long, sustaining sound such as a gong. Although this will eat up a fair amount of memory, here are some suggestions.

- Compress the gong sound when sampling to even out level variations. This will help create the smoothest looping effect.
- Set a loop after the initial attack of the gong, and loop as short a section of the sound as possible to conserve memory (see Fig. Appendix-1).
- Truncate that portion of the sound after the loop end point.
- With looping, the sound will have infinite sustain. For a more realistic effect, use SET-UP function 18 (DECAY/TUNE SELECT) to set the gong for decay. Use the slider to set an appropriate decay time.

Looping can also provide echo and DDL effects. Loop a complete sound so that it continually repeats. Then, use SET-UP function 18 to set a decay time; the repeats will fade out over the decay time. The effect is very similar to echo.

APPENDIX

APPENDIX B: UNDERSTANDING RHYTHMIC NOTATION

This extremely brief overview is intended solely as a refresher and memory jogger; for a detailed description of rhythmic notation, see any good book on music theory.

Measures: A piece of music is divided into measures, and each measure is divided into notes. The number of notes, and rhythmic value of the notes, depends both on the composition and the time signature (see Appendix C).

Note values: With a measure written in 4/4, there are four beats per measure, with each beat representing a quarter note. Thus, there are four quarter notes per measure of 4/4 music.

There are two eighth notes per quarter note. Thus, there are eight eighth notes per measure of 4/4 music.

There are four sixteenth notes per quarter note. Thus, there are sixteen sixteenth notes per measure of 4/4 music.

There are eight thirty-second notes per quarter note. Thus, there are thirty-two thirty second notes per measure of 4/4 music.

There are also notes which span a greater number of beats than quarter notes. A half-note equals two quarter notes. Therefore, there are two half-notes per measure of 4/4 music. A whole note equals four quarter notes. Therefore, there is one whole note per measure of 4/4 music.

Triplets: The above notes divide measures by factors of 2. However, there are some cases where you want to divide a beat into thirds, giving three notes per beat. Dividing a quarter note by three results in eighth note triplets. The reason why we use the term “eighth note triplets” is because the eighth note is closest to the rhythmic value which we want. Dividing an eighth note by three results in sixteenth note triplets. Dividing a sixteenth note by three results in thirty-second note triplets.

APPENDIX C: UNDERSTANDING TIME SIGNATURES

A time signature (also called metric signature) describes the meter of a piece of music. It consists of two numbers arranged like a fraction, such as 3/4, 4/4, etc. The top number (numerator) indicates the number of beats in each measure, while the bottom number (denominator) indicates the rhythmic value of each beat. For example, with a 3/4 time signature the numerator indicates that there are three notes per measure, while the denominator indicates that each of these notes is a quarter note. 4/4 indicates that each measure includes four quarter notes. Usually the downbeat (first beat) of each measure is emphasized by a metronome to help you get a feel for the meter.

3/4 and 4/4 are the most common time signatures, but they are by no means the only ones. In jazz, both 5/4 (where each measure has five 1/4 notes) and 7/4 (where each measure has seven 1/4 notes) are often used. In practice, complex time signatures are played like a

combination of simpler time signatures; for example, some 7/4 compositions would have you count each measure not as “1, 2, 3, 4, 5, 6, 7” but as “1, 2, 3, 4, 1, 2, 3”. It’s often easier for musicians to think of 7/4 as one bar of 4/4 and one bar of 3/4, since as we mentioned, 4/4 and 3/4 are extremely common time signatures.

APPENDIX D: UNDERSTANDING MIDI/SMPTE

MIDI is causing a certain amount of confusion among musicians. Fear not — it’s not all that difficult to understand, and the SP-1200 makes it particularly easy to deal with MIDI. For those of you who aren’t that familiar with MIDI, we’ll first answer some common questions.

What does the MIDI cable do?

An instrument already has an AC cord that carries electrical current, and an audio cord that carries audio signals to an amplifier. Now you have a third connection: the MIDI cable. This carries neither audio nor power, but transmits information about the status of the instrument to, and receives “status reports” from, other MIDI instruments. This information is coded in a computer language...a somewhat primitive language with few words and several dialects, but a language nonetheless.

What does MIDI stand for?

MIDI stands for Musical Instrument Digital Interface. You already know what “musical instrument” means, so that takes care of the first half of this phrase. Digital means that the instrument’s information is conveyed in digital, or computer, language. Interface is the term for the actual link between instruments, where data passes from one instrument to another. So MIDI is a link between musical instruments that speaks data in computer language.

How can information control a synthesizer or drum machine?

First we need to know a bit about computers, since MIDI instruments have microcomputer souls...in fact, MIDI could not exist without microcomputers.

Computers are decision makers, and they base those decisions on the data they receive. However, to be useable by a computer any data has to first be translated into a number-based language that the computer can understand. Actually, when you press a keyboard key with a computer-based instrument, you are not directly controlling the sound source. Instead, each time you close a keyboard switch you’re sending a number to the computer, and this number tells the computer what note you want it to play for you.

The computer’s “window on the world,” where it receives and transmits numerical data, is called its data bus. The computer looks to see whether any information is on the data bus, and if so, acts on this data. For example, if it sees a digital “word” that says “play F#” on the data bus, it will do as the data commands and control a sound source so that it plays an

APPENDIX

F#. However, note that the computer doesn't care whether this word is placed on the data bus due to closing a keyboard switch or striking a drum head — once MIDI translates a note into computer language, the note becomes compatible with any device that speaks the same language. MIDI provides access to the computer's data bus and selects which device will be "on the bus" at any particular moment, thus letting you determine the flow of information from one MIDI device to another. This is why having a specification which manufacturers can follow is so important; it insures that a variety of otherwise incompatible devices will be able to communicate with each other over a common data bus.

How does MIDI differentiate between different MIDI instruments on the same bus?

MIDI provides 16 independent channels of information suitable for driving up to 16 polyphonic synthesizers or other MIDI devices. There are three modes that determine how each MIDI instrument responds to these channels.

In Omni mode, the SP-1200 (or any other MIDI device) listens to all channels at once. No matter how many notes from how many sources make it through the MIDI bus into the instrument, when in Omni mode it will attempt to play all of them.

In Poly mode, the instrument can "tune in" to one MIDI channel — just like you can tune in one channel of your television. Having a bunch of instruments set to Poly mode lets you send specific information to different instruments over different MIDI channels.

Mono mode is considered a "multi-timbral" mode that is applicable to multi-voice synthesizers. Therefore, mono mode is not implemented in the SP-1200.

16 channels, huh? Sounds like a lot of patch cords to me!

MIDI information is transmitted serially, meaning that all data is sent in sequence. As a result, a single line can carry the MIDI information for all 16 channels, with each instrument monitoring all the words that pass over the MIDI interface but responding only to the data on its particular channel. Typically, MIDI instruments include a MIDI IN, MIDI OUT, and MIDI THRU jack. The instrument receives data over the MIDI IN jack and transmits data over the MIDI OUT jack; the MIDI THRU jack provides a replica of the signal at the MIDI IN jack. Therefore, if you want to slave three MIDI devices to a master MIDI device, you would patch the MIDI OUT from the master to the MIDI IN of the first slave, patch MIDI THRU from the first slave to the MIDI IN of the second slave, and connect MIDI THRU from the second slave to MIDI IN of the third slave.

What kind of words does the MIDI language include?

Spoken language is a collection of words that convey a particular set of meanings, hopefully understood by all those who speak the language. As soon as we start talking about a musical language, the first question is: What concepts do we want this language to define? Since musical instruments will be doing the talking, the language should consist of musical terms — pitch, tempo, and so on.

The words of greatest interest to the SP-1200 relate to pitch and tempo. The SP-1200 sounds can respond to different notes being sent over MIDI (see Section 6A); therefore, drum sounds can be played by hitting individual notes on a MIDI keyboard. If the keyboard sends velocity (dynamics) data, the SP-1200 will respond to this data. The SP-1200 can also “slave” to tempo data being sent over MIDI from a master, or serve as a MIDI master to which other MIDI devices refer for tempo information.

For a more detailed description of the complete MIDI vocabulary and MIDI in general, refer to the book “MIDI For Musicians” by the author of this manual (available from music stores or write to Music Sales, 24 East 22nd St., New York, NY 10010. The introduction date is January 1986).

Dealing With “MIDIosyncracies”

There are certain compatibility problems between MIDI gear from different manufacturers; however, many problems are created by operator error and/or a lack of understanding how MIDI works. If you transmit information on one channel and have the “receiver” set up for a different channel, forget it. MIDI is quite unforgiving that way...you can hit a bum note and not too many people will notice, but send a computer a wrong number and it will most definitely notice.

MIDI is a lot of fun provided that you don't get discouraged when things go wrong. One of the major problems is “data clogging” of the MIDI data stream. If MIDI is handling drum data, keyboard synthesizer data, timing data, and so on, an excess of information can cause the system to slow down or possibly malfunction. If this occurs, try to figure out what data can be “filtered out” of the MIDI stream. For example, keyboard aftertouch information requires much data; filtering this out of the data stream leaves more breathing room for other data, such as the timing information received by the SP-1200.

SMPTE

SMPTE time code was adopted by the Society of Motion Picture and Television Engineers in order to synchronize audio to video. Basically, SMPTE is a digital code that is recorded on audio tape or video tape, or “burned into” film. This code outputs time information as hours, minutes, seconds, and “frames” (1/30th of a second intervals). For synchronization, sophisticated machines “look” at the SMPTE time code tracks on the audio and video machines to be synchronized, and correct the speed of one unit vis-a-vis the other to maintain synchronization. These error corrections are very subtle and are not noticeable.

The SP-1200 uses SMPTE so that songs and sequences may be started at a specific frame of time code. The SP-1200 can also write SMPTE time code on tape.

APPENDIX

APPENDIX E: TIPS ON CREATING REALISTIC DRUM PARTS

If you're a drummer, you probably don't need to read this. But for those of you who are primarily melodic players and are using the SP-1200 to augment your recordings or live act, read on.

- **Listen to drum parts by good drummers.** Whenever a record comes on, study the drum sound. Note how the drummer not only sets a solid base on which the other instruments can play, but makes creative use of both notes and spaces.
- **Keep it simple.** Drums are not a melodic instrument, but a rhythmic instrument. Often a simple backbeat is more effective than trying to do elaborate series of drum rolls.
- **Beware the three-armed drummer.** Remember that a drummer has two feet and two hands; therefore, you can't have a bass drum, high hat, two toms, a snare drum, and rim sound occurring at the same time. Make sure that your parts are physically consistent with the way people play drums, or they will not sound "right".
- **Use dynamics creatively.** A drum part without dynamics isn't much of a drum part at all.
- **Work carefully with bass instruments.** The bass and drums should lock together into a cohesive sound. If the bass player syncopates in a particular way, try to match that with the drums.

APPENDIX F: HOW THE SP-1200 WORKS

Here's a brief idea of how the SP-1200 does its magic.

The drum sounds were recorded at a studio using real drums and a human drummer. These sounds were then converted into digital form ("digitized"), and "recorded" into computer memory chips. This may sound like an involved process; and it is. Fortunately, the people at E-MU are experts at digitizing sounds.

The various control functions are controlled by a built-in microcomputer which is as powerful, and in some cases more powerful, than some of the "personal" computers which are now available. Song and segment information is recorded in RAM (random access memory); although RAM loses its data when the power supply is turned off, it can be saved to floppy disks for permanent storage.

The SP-1200 is really an amazing example of what current technology, coupled with creative engineering, can accomplish. We're proud to offer it to you, and hope that it helps you further your musical dreams. We thank you for your confidence in E-MU products, and would greatly appreciate any comments you might have concerning the SP-1200.

Contact E-mu at (831) 438-1921, and ask for customer service.

APPENDIX G: SPECIAL FUNCTIONS (SET-UP MODULE FUNCTION #23)

11. **CATALOG FUNCTIONS** Use slider #1 to display the options available in the special function mode.
12. **CLEAR ALL MEMORY** This function is used to clear the SP-1200 of all segment and song information, as well as all sounds. If you wish to abort the erase procedure, simply answer "NO" to the the "REALLY?" prompt in the LCD.

CAUTION: All information not saved to disk will be lost forever when the CLEAR ALL MEMORY function is complete.
13. **MEMORY REMAINING** The LCD will show you available sequencer note memory for segments and songs (in percentage) and available sound sampling memory (in seconds). Remember that there is a limit of 2.5 seconds for any one sample although the display may show more than 2.5 seconds of total sample time available.
14. **WRITE SMPTE** Please refer to section 6-G for information about writing SMPTE.
15. **CLEAR SOUND MEMORY** This function is used to clear the SP-1200 of all sounds. Segment and song memory is unaffected.
16. **CLEAR SEQUENCES** This function is used to clear the SP-1200 of all segment and song information. All sounds will remain intact.
17. **COPY SOUND** This function allows you to move any sound in the SP-1200 to any location. For example, if you want to move sound D8 to location D7 and sound A1 to location D8, you would follow the procedure outlined below.

	PROCEDURE	DISPLAY READS
1. Press:	Set-up Module button	Set-up function? (11-23)
2. Press:	23 (Special) on keypad	Catalog Functions Use Slider #1
3. Press:	17 (Copy sound) on keypad	Copy sound: Select Sound
4. Press:	D8 button (the sound to be copied)	D8 —> Select Sound
5. Press:	D7 button (the destination location)	D8 —> D7 Confirm? y/n
6. Press:	Yes on keypad (to confirm and execute copy)	Catalog Functions Use Slider #1

Now the D8 sound is found in both the D8 and D7 locations.

APPENDIX

	PROCEDURE	DISPLAY READS
7. Press:	17 (copy sound) on keypad	Copy Sound: Select Sound
8. Press:	A1 button (the sound to be copied)	A1 —> Select Sound
9. Press:	D8 button (the destination location)	A1 —> D8 Confirm? y/n
10. Press:	Yes on keypad (to confirm and execute copy)	Catalog Functions Use Slider #1

Note: Copies of the sounds have the same name as the original, so it's a good idea to re-name copies as you make them using the "Name Sound" function.

ALWAYS make sure that you have stored a sound on disk before overwriting it!

- 18. SWAP SOUNDS** Please refer to section 2-L (page 22) for information on swapping sounds.
- 19. DEFAULT DECAY** This function applies only to sounds in the TUNE mode (Set-up function #18 - Decay/Tune Select) that need to be decayed as well. A decay range of 00 to 31 is available. Note that all sounds in the tune mode will be affected by this setting.
- 20. INIT DK/TUNE** This function works independently for each sound and provides the initial tuning or decay length depending on the selection made in Set-up function #18 (Decay/Tune Select). Each sound on the SP 1200 can be played at 32 different tunings or decays, but only 16 tunings or decays for each sound can be accessed at a time. The INIT DK/TUNE function sets the center position of the tune/decay slider so that the most useful range can be selected.

To Set the INIT DK/TUNE:

1. Select SPECIAL #20. The display says: Select Sound
2. Select a sound by pressing a black play button. The display says: "Init DK/TUNE: 16. Use Slider #1".
3. Move Slider #1 to change the sound's initial decay/tune from 0 to 31.
 - All tune and decay values for each sound stored in the sequences are based relative to the INIT DK/TUNE setting. Only 16 values are usable by the sequences and changing the INIT DK/TUNE value after a sequence has been recorded will change the tuning (or decay) of that sound in the sequence.
 - A sound will play at it's assigned INIT DK/TUNE range setting when it is played over MIDI (with pitch keys off), or when the SP 1200 is first turned on.

- All new sounds created by sampling are automatically initialized to a INIT DK/TUNE setting of 16, which is right in the middle of the range and denotes the original pitch of the sampled sound.
- If a sound's decay/tune select is changed by Setup function #18, the INIT DK/TUNE setting is reset to the nominal value, 16.
- To permanently save the the INIT DK/TUNE settings it is necessary to SAVE SOUNDS using DISK function #2.

21. **NAME SOUND** This function allows you to name each of the sampled sounds with a six letter name and a three letter abbreviation (which is used when you catalog sounds). The choice of letters is selected with slider #1 and you move on to the next or previous letter in the name using the <— and —> buttons. The first letters of the full and abbreviated names must always be the same and the choice of letters for the abbreviation is limited to the letters used in the full name. Scroll through the possibilities for the 2nd and 3rd letters with Slider #1. Press ENTER to exit the function.

Note: To avoid severe confusion, it is a good idea to name each new sound. Unnamed sounds are given the default sound location names A1, B6, D2, etc., which can be difficult to remember. Copies of the sounds have the same name as the original, so it's also a good idea to rename copies as you make them.

22. **DYNAMIC ALLOCATION** Please refer to section 1-N for information on Dynamic Allocation.

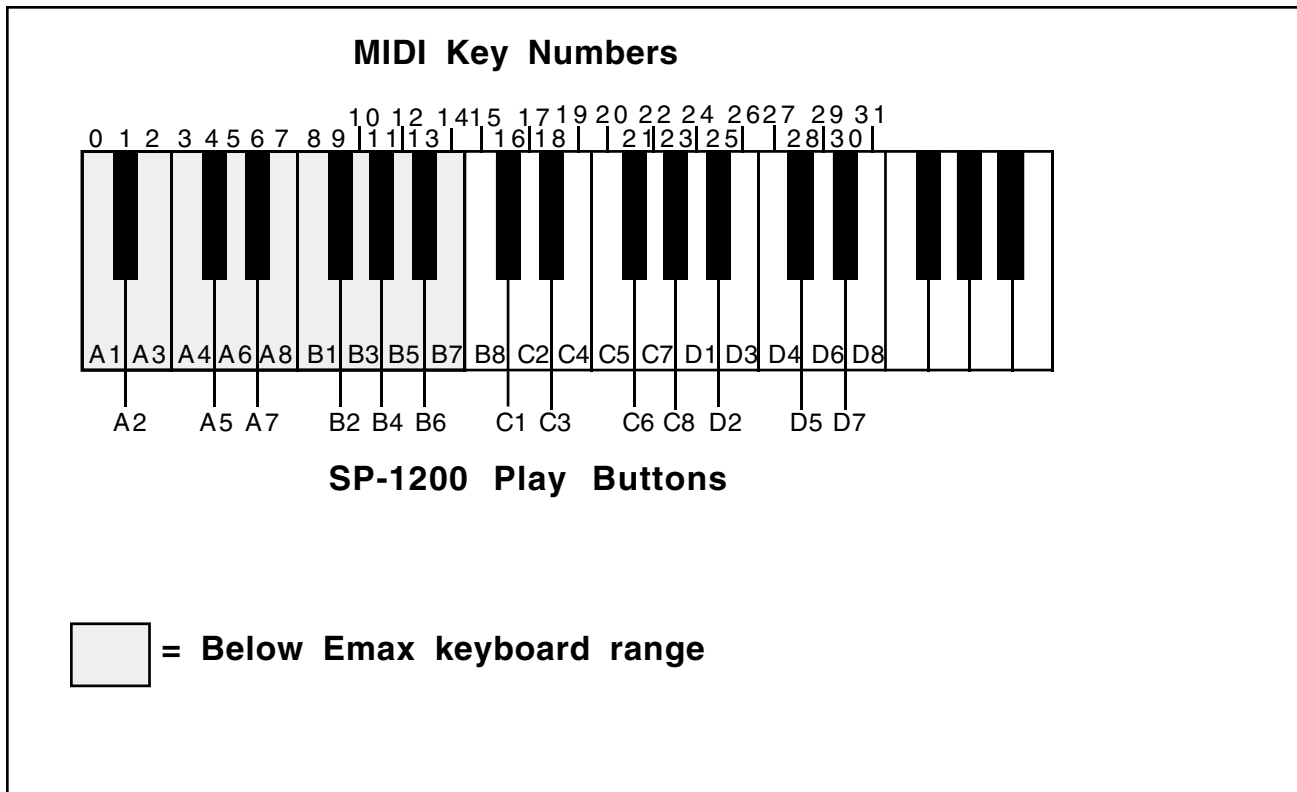
23. **Tx SOUND DUMP** (Transmit MIDI Sound Dump)

This function sends the selected sound out over MIDI to an external device. The external device must be equipped with the "MIDI Sample Dump" software, which has been standardized among many manufacturers. The Emax is equipped with this software.

1. Connect the SP 1200's MIDI IN to the external device's MIDI OUT, and connect the SP 1200's MIDI OUT to the external device's MIDI IN. (The sound dump may work if the SP 1200's MIDI IN is not connected, But the sound transfer will be much slower.)
2. Press SPECIAL 23. The display says "Select Sound".
3. Playing any one of the 32 sounds causes that sound (if not empty) to be sent out over MIDI as a sound dump, as per the Sample Dump Standard established by the MMA (The MIDI Manufacturers Association).
4. After selecting the sound (by pressing the appropriate play button), the SP 1200 will start sending the sound. The message "Sending Sound Data over MIDI" will appear in the display, and an asterisk will flash to let you know that the dump is progressing normally.

APPENDIX

- When the sound dump is complete, the message "Sound Dump Good Press Enter" is displayed.



Notes: Sounds transferred over MIDI are given sound numbers. Sounds on the SP-1200 are numbered 0 thru 31, with 0 corresponding to A1, 1 with A2, all the way through until 31 being D8.

The device receiving the sound must be able to put the sound somewhere:

- In the case of Emax, the sound will be put in the current preset, on the primary voice of key number 0 through 31, depending on the sound number, where key number 0 is "A-1", key 15 is the bottom key on the keyboard, "C1", and key 31 is "E2". Use the "Copy Voice(s)" function on the Emax to move sounds from keys "A-1" through "B1" up to the 61 key range of the Emax.

- Many other samplers simply number their sounds, from 1 to 8 or whatever, so they will only be able to accept sounds with those numbers. You may have to use "Copy Sound" (Special #17) to move a desired sound to a sound number that the receiving device will accept.

ERROR? If the receiving device sends an error or some other MIDI information that the SP 1200 doesn't expect, the error message "Sound Dump Bad, Press Enter" appears in the display. This either indicates some kind of MIDI incompatibility between the two machines or the selected sound numbers don't match.

24. Rx SOUND DUMP (Receive MIDI Sound Dump)

The external device must be equipped with the "MIDI Sample Dump" software.

1. Connect the SP 1200's MIDI IN to the external device's MIDI OUT, and connect the SP 1200's MIDI OUT to the external device's MIDI IN. (The sound dump may work if the SP 1200's MIDI OUT is not connected, but the sound transfer will be much slower.)
2. Press SPECIAL 24. The display says "Select Sound".
3. Playing any one of the 32 sounds causes the SP 1200 to send a "Dump Request" message to the external device, requesting that it send the sound whose number corresponds to the one selected.

Note: The SP 1200 will only send the request if the selected sound is NOT empty. The SP 1200 will only accept sound data up to the size of the existing sound in the selected location. If a smaller sound is sent, the SP 1200 will fill the leftover memory with silence. You should then truncate the sound to conserve available memory.

4. After selecting the sound (by pressing the appropriate play button), the sound dump should start. The display will go back to the "Catalog Functions" message until the sound dump begins. When the external device starts sending data, the message "Receiving Sound Data over MIDI" will appear in the display, and an asterisk will flash to let you know that the dump is progressing normally.
5. When the sound dump is complete, the message "Receive Done Press Enter" is displayed.

Notes: Sounds transferred over MIDI are given sound numbers. Sounds on the SP-1200 are numbered 0 thru 31, with 0 corresponding to A1, 1 with A2, all the way through until 31 being D8.

The device that's being requested to send the sound must have this sound somewhere:

- In the case of Emax, the sound will come from the current preset, on the primary voice of key number 0 through 31, depending on the sound number, where key number 0 is "A-1", key 15 is the bottom key on the keyboard, "C1", and key 31 is "E2". Use the "Copy Voice(s)" function on the Emax to move sounds to an appropriate key on the Emax.

- Many other samplers simply number their sounds, from 1 to 8 or whatever, so they will only be able to send sounds with those numbers. You may have to use "Copy Sound" (Special #17) to move a sound to the desired location on the SP-1200 after it's been received

APPENDIX

ERROR? If the SP 1200 never displays the “Receiving Sound Data over MIDI” message, and simply stays in the “Catalog Functions” mode, the external device either didn’t acknowledge the request or the selected sound on the

SP-1200 was empty. If the selected sound on the SP 1200 wasn’t empty, there could be some kind of MIDI incompatibility between the two machines or the selected sound numbers don’t match.

25. **REVERSE SOUND** This function reverses the sound in memory. The display asks you to select a sound by pressing one of the black play buttons. After you have done so you are asked to: Confirm Y/N. Reversing the sound actually reverses the order of sound data in memory, so all copies of the sound will also be reversed. Reverse can be undone by reversing the sound again.

SOFTWARE VERSION Shows the version of software that the unit is currently using. The software is loaded into the SP-1200 on power-up. The higher the software number, the more recent it is. As an example; Version 1.2 is more recent than Version 1.0.

APPENDIX H: INTERFACE INTERCONNECTION DIAGRAMS

BASIC SMPTE SYNC TO TAPE CONNECTION

This setup can be used to synchronize your entire MIDI system to tape. Since drums are used to keep time, it makes sense to use the drum machine to function as the master clock. That the SP-1200 uses SMPTE and allows tempo changes within a song are added incentives to using this scheme.

SMPTE has a couple of big advantages over a standard click track. First, it lets you synchronize from anywhere in the song (with a click track you must always start from the beginning). When the SP-1200 locks on to the SMPTE code it sends a MIDI Song Pointer on its MIDI Out port, enabling your MIDI sequencer to lock on too. This can be a real time saver when doing punch-ins or editing on your sequencer.

Second, the SP-1200 allows tempo changes independent of the SMPTE code. This allows you to edit tempo changes after time code has been laid down, which cannot be done using a standard click track.

SYNCRONIZING A NON-MIDI SEQUENCER TO THE SP-1200

You may own an older model sequencer or drum machine that does not speak MIDI. You can synchronize this equipment to the rest of your setup by programming the metronome output on the SP-1200 to generate a 24 pulse-per-quarter note sync signal (see section 3K). The SP-1200 can also control arpeggiators and ancient analog sequencers by programming the MET/CLK out to the desired rate (1/4 notes to 32nd note triplets). If your older sequencer requires more than 24 ppq note, you will have to use it as the master and slave the SP-1200 to it via the SMPTE/Clock In jack.

RECORDING INTO THE SP-1200 WITH MIDI DRUM PADS

This is a good way to put the human feel back into a drum machine. Connect MIDI Out from the drum pads to the MIDI In on the SP-1200. Syncing your sequencer with MIDI clock from the SP-1200 will allow the complete song to be heard as you record.

MASTER SEQUENCER CONTROLLING MIDI SYSTEM

If so desired, your MIDI sequencer can serve as the master controller. Drum parts can be recorded into the master sequencer or the SP-1200. If the SP-1200's sequencer is handling the drums, set the SP-1200 to poly mode and select an unused MIDI channel to block incoming note-on information. MIDI Thru re-transmits all the MIDI data to the rest of your system.

APPENDIX

APPENDIX I: CASSETTE/MIDIDISK OPERATION

The SP-1200 Cassette/MidiDisk Interface allows users to transfer sequence and sound data from SP-12 units to the SP-1200 using either the cassette interface of the SP-12 or products using the JL Cooper MidiDisk format. To transfer data from Commodore 1541 diskettes, load the data into the SP-12 and transfer using the Cassette OUT of the SP-12 into the SMPTE IN of the SP-1200.

To activate the SP-1200 Cassette/MidiDisk Interface:

Power up the SP-1200 holding down the disk button, or press the disk button before a software diskette has been inserted. You will see the display:

1 = Cassette

2 = MidiDisk

Press the appropriate button for the transfer you wish to perform. You will see the display:

1 = Seqs 2 = SnDs

3 = MakeDsk

Load the sequences and/or sounds into the SP-1200 by selecting the proper code and following the prompted instructions. Press ENTER to return to the menu.

When you have loaded the sequences and sounds into the instrument, insert a previously formatted SP-1200 diskette and press 3 to over-write both the sequences and sounds onto the diskette. **EVEN IF YOU HAVE NOT LOADED SOUNDS OR SEQUENCES, BOTH WILL BE OVERWRITTEN.**

You may now transfer other cassette or MidiDisk data, or re-boot the instrument normally to utilize the transferred data. You will normally add these sounds to others, as the SP-12 ROM sounds are not transferred through this process. You will also need to name your sounds using the SP-1200 sound naming feature.

APPENDIX J: MIDI IMPLEMENTATION

SP 1200 MIDI Implementation

Copyright E-MU Systems, Inc. 1987

X = item implemented

- = item not implemented

MIDI command	Transmitted?	Received?
Note off	X	X
Note on	X	X
Poly key pressure	-	-
Control change	-	-
Program change	-	-
Channel pressure	-	-
Pitch wheel	-	-
Sustain footswitch	-	-
Local control on/off	-	-
All notes off	-	X
Omni mode	-	X
Mono mode	-	-
Poly mode	-	X
Song position pointer	X	X
Song select	X	X
Tune request	-	-
Timing clock	X	X
Start sequence	X	X
Continue sequence	X	X
Stop sequence	X	X
Active sensing	-	-
System reset	-	-
System exclusives	X	X

Note: All numbers in HEX, except numbers in parenthesis, which are DECIMAL.

APPENDIX

TRANSMITTED MESSAGES: BASIC MIDI COMMANDS

Note On/Off (“Pitch Keys” off)	9n	n = MIDI channel no. (0 to 15)
	kk	kk = key# (36 to 67)
	vv	velocity (loudness)
	kk	kk = key# (36 to 67)
	00	zero velocity for note off
Note On/Off (“Pitch Keys” on)	9n	n = MIDI channel no. (0 to 15)
	pp	pp = pitch key# (69 to 83)
	40	nominal velocity (64)
	kk	kk = key# (36 to 67)
	vv	velocity (loudness)
	kk	kk = key# (36 to 67)
	00	zero velocity (key’s note off)
	pp	pp = pitch key# (69 to 83)
00	zero velocity (pitch key’s note off)	

- Note Ons are followed immediately by note off, running status, zero velocity.
- Velocity is fixed at 7c unless “dynamic buttons” is on, in which case the velocity value will vary from 0c to 7c.

Song Position Pointer	f2	
	LL	Song position value, ls byte
	mm	Song position value, ms byte

- LL and mm make up a 14 bit number which corresponds to the number of MIDI beats (1 beat = 6 MIDI clocks = one sixteenth note) since the start of the song.
- Sent by SP 1200 when Sync is set to SMPTE, and a new SMPTE time code is received. Will fast-forward to the appropriate place in the song or segment and output the appropriate song position value over MIDI.
- After sending a Song Position Pointer, the SP 1200 will send a Continue command.

APPENDIX

Transmitting a sound dump from the SP 1200 to an external device with the MMA Sample Dump Standard.

- There are two ways an SP 1200 can be made to transmit a sound dump over MIDI:
- SP 1200 can receive a “Dump Request” exclusive from an external device, (hereafter called the “Requestor”, specifying a sound number (0 to 31).
- Manually, from the front panel “Special” function (23).
- SP 1200 first checks if the requested sound exists (size not = 0):
 - doesn’t exist: request is ignored, nothing happens.
 - does exist: continue.
- SP 1200 responds by displaying “Sending Sound Data over MIDI” on it’s LCD.
- SP 1200 then sends the “MMA sample dump header”, telling requestor among other things, how big of a sample to expect.
- SP 1200 then polls it’s MIDI input line, waiting for a response from requestor within SP 1200’s timeout period of 5 seconds.
- If response is an ACK, (packet # ignored) SP 1200 will continue dump.
- If response is a WAIT, SP 1200 will reset it’s timeout counter (5 seconds), and go back to waiting for a response again. If requestor needs more time to make up it’s mind, it should send more Wait commands.
- If no response at all, SP 1200 will assume an “open loop” system and continue the dump.
- If response is anything else, it is bad, and SP 1200 will display “Sound Dump Bad, Press Enter”, then send a CANCEL command, and abort back to normal SP 1200 operation.
- SP 1200 now switches it’s timeout from 5 seconds to about 20 mS.
- SP 1200 will then send the sound dump in a series of “MMA Data Packets”, starting with packet # 00. After Requestor receives packet, it responds:
- If response is an ACK, SP 1200 will continue dump with next packet. An ACK response must have the correct packet # . Packet numbers continue up thru 7f, then wrap around back to 00.
- If response is a WAIT, SP 1200 will reset it’s timeout counter (20 mS), and go back to waiting for a response again.

If response is a NAK, SP 1200 will try sending the same packet again.

- If no response at all, SP 1200 will assume an “open loop” system and continue the dump.
- If response is anything else, it is bad, and SP 1200 will display “Sound Dump Bad, Press Enter”, then send a CANCEL command, and abort back to normal SP 1200 operation.
- SP 1200 will continue sending packets, getting an ACK for each one, until it has sent the entire dump, as specified by the “sound length” in the Sample Dump Header.
- The last packet will always contain 120 data bytes, even if there may be fewer than that remaining in the sound. The remaining bytes will be filled in with garbage data and should be ignored.
- After sending the last packet, SP 1200 displays “Sound Dump Good Press Enter”, and returns to normal operation.
- Every 8 packets sent, SP 1200 will toggle an asterisk on the LCD.

MMA Sample Dump Header

f0	system exclusive
7e	
0c	MIDI base channel (0 to 15)
01	MMA exclusive number
ss	sample number lsb (0 to 31)
00	sample number msb (always 0)
0c	significant bits (12)
02	sample period (lsb) in nsec
2c	sample period (nsb)
02	sample period (msb)
LL	sample length (lsb) in words
LL	sample length (nsb)
LL	sample length (msb)
ss	sustain loop start word (lsb)
ss	sustain loop start word (nsb)
ss	sustain loop start word (msb)
ee	sustain loop end word (lsb)

APPENDIX

ee	sustain loop end word (nsb)
ee	sustain loop end word (msb)
00	loop type (forwards only)
f7	EOX

Sample period is fixed at $(1/26.04)\text{kHz} = 9602$ HEX in nanoseconds.

MMA Data Packet

f0	system exclusive
7e	
0c	MIDI base channel (0 to 15)
02	MMA exclusive number
cc	packet count (0 to 127)
—	120 data bytes
—	
xx	checksum (exclusive OR of above 124 bytes)
f7	EOX

The (120) data bytes represent (60) 12-bit linear SP 1200 data words:

byte 0: 0bbbbbbb bbbbbbbb = 7 ms bits of data word 0

byte 1: 0aaaaa00 aaaaa = 5 ls bits of data word 0

byte 2: 0ddddddd ddddddd = 7 ms bits of data word 1

byte 3: 0cccc00 ccccc = 5 ls bits of data word 1

—etc—

byte 119: 0yyyyy00 yyyyyy = 5 ls bits of data word 59

The 12-bit data is in “complement offset binary” format: most negative value = 000 hex, “zero” = 800 hex, most positive = fff hex

Acknowledge (ACK)	f0	system exclusive
	7e	
	0c	MIDI base channel (0 to 15)
	7f	
	pp	packet number
	f7	EOX

See "Receiving a sound dump" description.

Not Acknowledge (NAK)	f0	system exclusive
	7e	
	0c	MIDI base channel (0 to 15)
	7e	
	pp	packet number
	f7	EOX

See "Receiving a sound dump" description.

Cancel Dump (CANCEL)	f0	system exclusive
	7e	
	0c	MIDI base channel (0 to 15)
	7d	
	pp	packet number
	f7	EOX

See "Receiving a sound dump" description.

APPENDIX

RECEIVED MESSAGES: BASIC MIDI COMMANDS

Note Off 8n n = MIDI channel # (0 to 15)

kk kk = key # (36 to 67)

vv vv = velocity (1 to 127) ignored

Note Off 9n n = MIDI channel # (0 to 15)

kk kk = key # (36 to 67)

00 zero velocity

Note On 9n n = MIDI channel # (0 to 15)

kk kk = key # (36 to 67)

vv vv = velocity (1 to 127)

If SP 1200 receives a Note On for key "kk", followed by a Note On for key "pp" before it gets a Note Off for "kk", then SP 1200 will play "kk" at pitch "pp".

All Notes Off & Mode Messages bn n = MIDI channel # (0 to 15)

mm mode command (123 thru 127)

00

All mode messages (123 thru 127) turn off notes whose source was MIDI.

If mode number was 123, 126, or 127, SP 1200 will only do the all notes off.

If mode number was 124, SP 1200 will also set POLY mode.

If mode number was 125, SP 1200 will also set OMNI mode.

Song Position Pointer f2

LL Song position value, ls byte

mm Song position value, ms byte

LL and mm make up a 14 bit number which corresponds to the number of MIDI beats (1 beat = 6 MIDI clocks = one sixteenth note) since the start of the song.

SP 1200 will only accept this command if Sync is set to MIDI.

Upon receiving this, SP 1200 will fast forward to the appropriate spot in the current song or segment. It will then wait for a Continue command followed by Timing Clocks before starting to play.

Song Select f3
 ss ss = sequence # (0 to 99)

Receiving this selects a new sequence on the SP1200.

Timing Clock f8

Ignored unless Sync is sent to MIDI.

Advances SP1200's sequencer by 1/96th note.

Ignored if SP 1200 is waiting for a Continue after receiving a Song Position Pointer.

If received while SP 1200 is fast forwarding after receiving a Song Position Pointer and a Continue, the Song Position cue point will just be incremented by one.

Sequencer Start fa

Sequencer Stop fc

RECEIVED MESSAGES: MMA SAMPLE DUMP COMMANDS

Dump Request	f0	system exclusive
	7e	
	0c	MIDI base channel (0 to 15)
	03	MMA exclusive number
	ss	sample number lsb (0 to 31)
	00	sample number msb (always 0)
	f7	EOX

Upon receiving this, SP 1200 will stop whatever it is doing and attempt to transmit an MMA sound dump of the specified sample. (See "Transmitting a sound dump" description.)

The sound number must be between (0 and 31), or else it is ignored. The "sound number msb" must always be 0. Sound 0 will replace the sound at A1 on the SP 1200, and sound (31) will replace sound D8.

MIDI base channel is ignored.

APPENDIX

Receiving a sound dump from an external device to the SP 1200 with the MMA sample dump.

There are two ways an SP 1200 can be made to receive a sound dump over MIDI:

1. SP 1200 can receive a "Sound Dump Header" exclusive from an external device, (hereafter called the "Sender"), specifying a sound number (0 to 31).
2. Manually, from the front panel "Special" function (24), which sends a "Dump Request" out MIDI for the specified sound. This may or may not cause a sound dump, depending on what the SP 1200 is connected to.

The sound being received will replace the existing sound in the SP 1200, so the first thing the SP 1200 does is check if the specified sound exists:

- If sound doesn't exist, (size = 0), SP 1200 aborts, nothing happens.
- If sound length is non-zero, dump continues.
- SP 1200 then displays "Receiving Sound Data over MIDI" on it's LCD.
- SP 1200 then sends an "ACK" (with packet# = 00, although Sender should ignore), to let Sender know that header was received OK.
- SP 1200 will now poll it's MIDI input line, waiting for data packet #00.
- Sender should then send the sound dump in a series of "MMA Data Packets", starting with packet # 00. After SP 1200 receives packet, it responds:

ACK, if packet was not garbled and packet # and checksum were correct. SP 1200 will then wait for the next packet.

CANCEL, if anything but an ACK is seen, or nothing at all is seen within the timeout period of 5 seconds. SP 1200 then displays "Sound Dump Bad, Press Enter", and returns to normal operation.

- If Sender sends a WAIT instead of a data packet, SP 1200 will reset it's timeout counter (5 seconds) and look for the same packet again.
- Note that SP 1200 will accept only as many bytes as are currently allocated for that sound in the SP 1200. If fewer than that many are sent, SP 1200 will fill the remainder with silence. If more than that are sent, SP 1200 will send CANCEL on the last packet it cares about, and ignore any subsequent packets.
- If all packets received OK, SP 1200 will display "Sample Dump Good Press Enter" and return to normal operation. If something was bad, SP 1200 will display "Sample Dump Bad Press Enter", and return to normal operation.
- Every 8 packets sent, SP 1200 will toggle an asterisk on the LCD.

Sample Dump Header	f0	system exclusive
	7e	
	0c	MIDI base channel (0 to 15)
	01	MMA exclusive number
	ss	sample number lsb (0 to 31)
	00	sample number msb (always 0)
	0c	significant bits
	pp	sample period (lsb) in nsec
	pp	sample period (nsb)
	pp	sample period (msb)
	LL	sample length (lsb) in words
	LL	sample length (nsb)
	LL	sample length (msb)
	ss	sustain loop start word (lsb)
	ss	sustain loop start word (nsb)
	ss	sustain loop start word (msb)
	ee	sustain loop end word (lsb)
	ee	sustain loop end word (nsb)
	ee	sustain loop end word (msb)
	Lt	loop type
	f7	EOX

- “MIDI base channel” is ignored.
- The sound number must be between (0 and 31), or else it is ignored. The “sound number msb” must always be 0. Sound 0 will replace the sound at A1 on the SP 1200, and sound (31) will replace sound D8.
- SP 1200 uses the “significant bits” to determine how to decode the Data Packets (see “MMA Data Packet” description below).
- SP 1200 ignores the “sample length”. Instead it will accept only as many bytes as are currently allocated for that sound in the SP 1200. If fewer than that many are sent, SP 1200 will fill the remainder with silence.
- Sample period is ignored, since SP 1200 has only one playback rate, 26.04 kHz.

APPENDIX

- Sustain “loop start” and “loop end “ are ignored. The original sound’s loop points are used instead.
- “Loop type” is ignored, since SP 1200 only has one loop type, forwards.

MMA Data Packet	f0	system exclusive
	7e	
	0c	MIDI base channel (0 to 15)
	02	MMA exclusive number
	cc	packet count (0 to 127)
	..	120 data bytes
	..	
	xx	checksum of above 124 bytes
	f7	EOX

- The MIDI base channel is ignored.
- The 120 data bytes are packed according to the “significant bits” in the sample dump header. There are 3 possible data packet configurations:

- for # significant bits = (8 thru 14):

The (120) data bytes represent (60) 14-bit linear data words:

byte 0:	0bbbbbbb	bbbbbbb = bits (7 thru 14) of data word 0
byte 1:	0aaaaaaa	aaaaaaa = bits (0 thru 6) of data word 0
byte 2:	0ddddddd	ddddddd = bits (7 thru 14) of data word 1
byte 3:	0ccccccc	ccccccc = bits (0 thru 6) of data word 1
	—————etc—————	
byte 119	0yyyyyyy	yyyyyyy = bits (0 thru 6) of data word 59

- for # significant bits = (15 thru 21):

The (120) data bytes represent (40) 21-bit linear data words:

byte 0:	0ccccccc	ccccccc = bits (15 thru 21) of data word 0
byte 1:	0bbbbbbb	bbbbbbb = bits (7 thru 14) of data word 0
byte 2:	0aaaaaaa	aaaaaaa = bits (0 thru 6) of data word 0
byte 3:	0ffffff	ffffff = bits (15 thru 21) of data word 1
byte 4:	0eeeeeee	eeeeeee = bits (0 thru 6) of data word 1
———etc———		
byte 119	0yyyyyyy	yyyyyyy = bits (0 thru 6) of data word 39

- for # significant bits = (22 thru 28):

The (120) data bytes represent (30) 28-bit linear data words:

byte 0:	0ddddddd	ddddddd = bits (22 thru 28) of data word 0
byte 1:	0ccccccc	ccccccc = bits (15 thru 21) of data word 0
byte 2:	0bbbbbbb	bbbbbbb = bits (7 thru 14) of data word 0
byte 3:	0aaaaaaa	aaaaaaa = bits (0 thru 6) of data word 0
byte 4:	0hhhhhhh	hhhhhhh = bits (22 thru 28) of data word 1
byte 5:	0ggggggg	ggggggg = bits (15 thru 21) of data word 1
———etc———		
byte 119	0wwwwwww	wwwwwww = bits (0 thru 6) of data word 29

While the SP 1200 will accept any of these formats, in all cases it will only use the (12) most significant bits of each data word and ignore all the rest.

Acknowledge (ACK)

f0	system exclusive
7e	
0c	MIDI base channel (0 to 15)
7f	
pp	packet number
f7	EOX

- MIDI base channel is ignored. See "Transmitting a sound dump"

APPENDIX

Not Acknowledged (NAK)

f0	system exclusive
7e	
0c	MIDI base channel (0 to 15)
7e	
pp	packet number
f7	EOX

- MIDI base channel is ignored.

See *“Transmitting a sound dump”*

Wait (WAIT)

f0	system exclusive
7e	
0c	MIDI base channel (0 to 15)
7c	
pp	packet number
f7	EOX

- MIDI base channel is ignored.

See *“Transmitting a sound dump”*



**WORLD HEADQUARTERS
E-MU/ENSONIQ**

P.O. BOX 660015
SCOTTS VALLEY, CA USA
95067-0015

TELEPHONE: 831-438-1921
FAX: 831-438-8612

**EUROPE, AFRICA, MIDDLE EAST
E-MU SYSTEMS**

SUITE 6, ADAM FERGUSON HOUSE
ESKMILLS INDUSTRIAL PARK
MUSSELBURGH, EAST LOTHIAN
SCOTLAND, EH21 7PQ

TELEPHONE: +44 (0) 131-653-6556
FAX: +44 (0) 131-665-0473